

LPL Polyclonal Antibody

Catalog Number: 163113

Product name

LPL Polyclonal Antibody

Specificity

Human, Mouse, Rat

Antibody description

Polyclonal antibody to LPL

Preparation

Antigen: Recombinant fusion protein containing a sequence corresponding to amino acids 124-475 of human LPL (NP_000228.1).

Formulation

PBS with 0.02% sodium azide, 50% glycerol, pH7.3.

Storage

Store at -20°C. Avoid freeze / thaw cycles.

Clonality

Polyclonal

Ig Type

Rabbit IgG

Applications

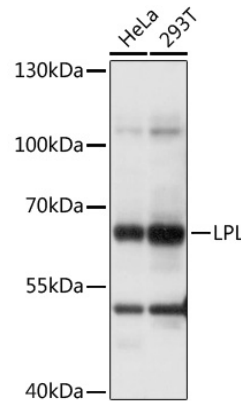
WB, IF

Dilutions

WB 1:500 - 1:2000

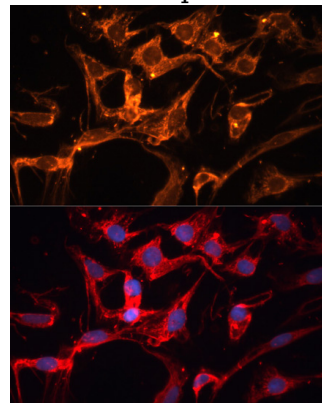
IF 1:50 - 1:200

Validations



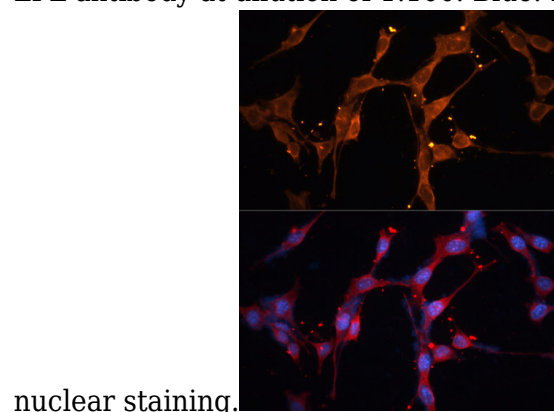
Western blot - LPL Polyclonal Antibody

Western blot analysis of extracts of various cell lines, using LPL antibody at 1:1000 dilution. Secondary antibody: HRP Goat Anti-Rabbit IgG (H+L) at 1:10000 dilution. Lysates/proteins: 25ug per lane. Blocking buffer: 3% nonfat dry milk in TBST. Detection: ECL Basic Kit. Exposure time: 1s.



Immunofluorescence - LPL Polyclonal Antibody

Immunofluorescence analysis of C6 cells using LPL antibody at dilution of 1:100. Blue: DAPI for



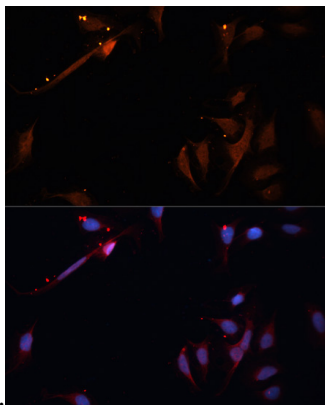
nuclear staining.

LPL Polyclonal Antibody

Catalog Number: 163113

Immunofluorescence - LPL Polyclonal Antibody

Immunofluorescence analysis of NIH/3T3 cells using LPL antibody at dilution of 1:100. Blue:



DAPI for nuclear staining.

Immunofluorescence - LPL Polyclonal Antibody

Immunofluorescence analysis of U-2OS cells using LPL antibody at dilution of 1:100. Blue: DAPI for nuclear staining.