

RFC1 Polyclonal Antibody

Catalog Number: 163110

Product name

RFC1 Polyclonal Antibody

Specificity

Human

Antibody description

Polyclonal antibody to RFC1

Preparation

Antigen: Recombinant fusion protein containing a sequence corresponding to amino acids 400-700 of human RFC1 (NP_001191676.1).

Formulation

PBS with 0.02% sodium azide, 50% glycerol, pH7.3.

Storage

Store at -20°C. Avoid freeze / thaw cycles.

Clonality

Polyclonal

Ig Type

Rabbit IgG

Applications

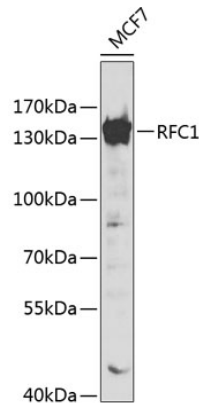
WB, IF

Dilutions

WB 1:500 - 1:2000

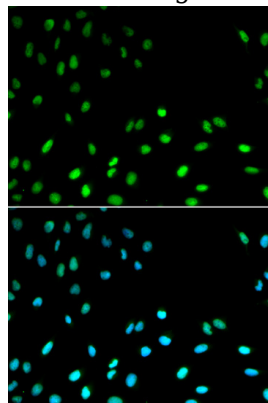
IF 1:50 - 1:200

Validations



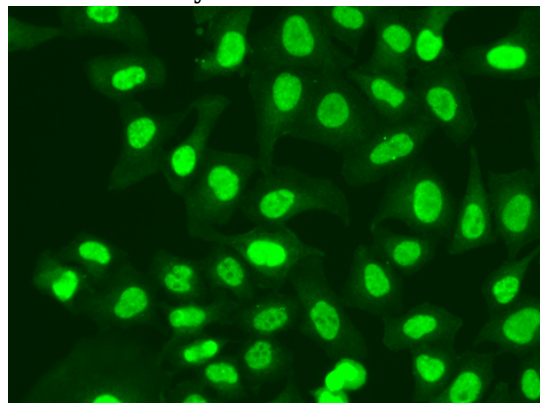
Western blot - RFC1 Polyclonal Antibody

Western blot analysis of extracts of MCF-7 cells, using RFC1 antibody at 1:500 dilution. Secondary antibody: HRP Goat Anti-Rabbit IgG (H+L) at 1:10000 dilution. Lysates/proteins: 25ug per lane. Blocking buffer: 3% nonfat dry milk in TBST.



Immunofluorescence - RFC1 Polyclonal Antibody

Immunofluorescence analysis of MCF-7 cells using RFC1 antibody. Blue: DAPI for nuclear staining.



Immunofluorescence - RFC1 Polyclonal Antibody

Immunofluorescence analysis of A549 cells using

RFC1 Polyclonal Antibody



Catalog Number: 163110

RFC1 antibody .