

# KPNA2 Polyclonal Antibody



Catalog Number: 163101

## Product name

KPNA2 Polyclonal Antibody

## Specificity

Human, Mouse

## Antibody description

Polyclonal antibody to KPNA2

## Preparation

Antigen: Recombinant fusion protein containing a sequence corresponding to amino acids 1-290 of human KPNA2 (NP\_002257.1).

## Formulation

PBS with 0.02% sodium azide, 50% glycerol, pH7.3.

## Storage

Store at -20°C. Avoid freeze / thaw cycles.

## Clonality

Polyclonal

## Ig Type

Rabbit IgG

## Applications

WB, IF, IP

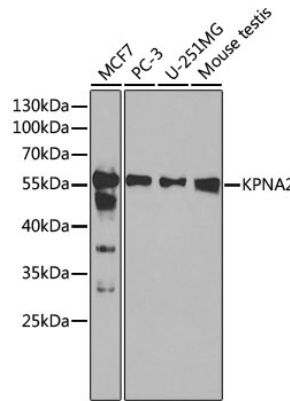
## Dilutions

WB 1:500 - 1:2000

IF 1:50 - 1:200

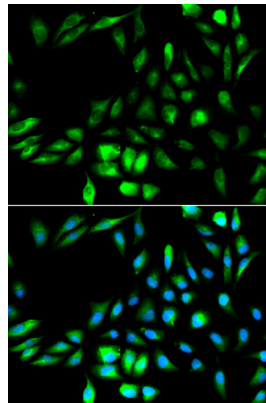
IP 1:50 - 1:100

## Validations



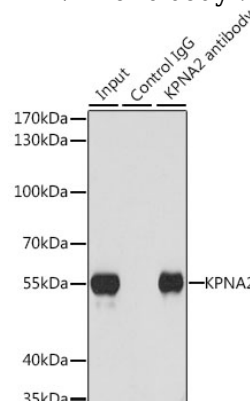
Western blot - KPNA2 Polyclonal Antibody

Western blot analysis of extracts of various cell lines, using KPNA2 antibody at 1:1000 dilution. Secondary antibody: HRP Goat Anti-Rabbit IgG (H+L) at 1:10000 dilution. Lysates/proteins: 25ug per lane. Blocking buffer: 3% nonfat dry milk in TBST.



Immunofluorescence - KPNA2 Polyclonal Antibody

Immunofluorescence analysis of MCF-7 cells using KPNA2 antibody. Blue: DAPI for nuclear staining.



Immunoprecipitation - KPNA2 Polyclonal Antibody

# KPNA2 Polyclonal Antibody



Catalog Number: 163101

---

Immunoprecipitation analysis of 200ug extracts of U-251MG cells, using 3 ug KPNA2 antibody . Western blot was performed from the immunoprecipitate using KPNA2 antibody at a dilution of 1:1000.