

# PIMREG Polyclonal Antibody



Catalog Number: 163094

## Product name

PIMREG Polyclonal Antibody

## Specificity

Human, Mouse

## Antibody description

Polyclonal antibody to PIMREG

## Preparation

Antigen: Recombinant fusion protein containing a sequence corresponding to amino acids 100-200 of human PIMREG (NP\_001182157).

## Formulation

PBS with 0.02% sodium azide, 50% glycerol, pH7.3.

## Storage

Store at -20°C. Avoid freeze / thaw cycles.

## Clonality

Polyclonal

## Ig Type

Rabbit IgG

## Applications

WB, IHC, IF

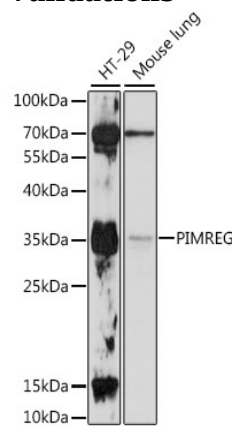
## Dilutions

WB 1:500 - 1:2000

IHC 1:50 - 1:200

IF 1:50 - 1:200

## Validations



Western blot - PIMREG Polyclonal Antibody

Western blot analysis of extracts of various cell lines, using PIMREG antibody at 1:500 dilution. Secondary antibody: HRP Goat Anti-Rabbit IgG (H+L) at 1:10000 dilution. Lysates/proteins: 25ug per lane. Blocking buffer: 3% nonfat dry milk in TBST. Detection: ECL Basic Kit. Exposure time: 10s.