

# LAMC1 Polyclonal Antibody



Catalog Number: 162975

## Product name

LAMC1 Polyclonal Antibody

## Specificity

Human, Mouse, Rat

## Antibody description

Polyclonal antibody to LAMC1

## Preparation

Antigen: Recombinant fusion protein containing a sequence corresponding to amino acids 1300-1609 of human LAMC1 (NP\_002284.3).

## Formulation

PBS with 0.02% sodium azide, 50% glycerol, pH7.3.

## Storage

Store at -20°C. Avoid freeze / thaw cycles.

## Clonality

Polyclonal

## Ig Type

Rabbit IgG

## Applications

WB, IHC, IF

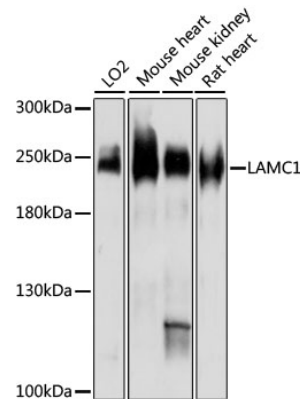
## Dilutions

WB 1:500 - 1:2000

IHC 1:50 - 1:200

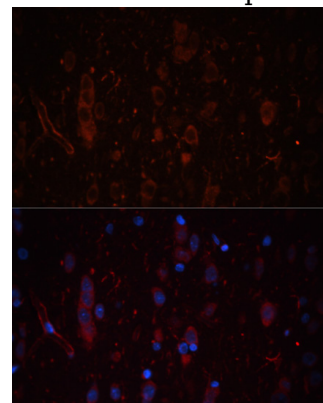
IF 1:50 - 1:200

## Validations



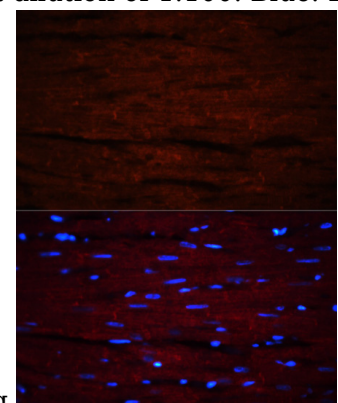
Western blot - LAMC1 Polyclonal Antibody

Western blot analysis of extracts of various cell lines, using LAMC1 antibody at 1:3000 dilution. Secondary antibody: HRP Goat Anti-Rabbit IgG (H+L) at 1:10000 dilution. Lysates/proteins: 25ug per lane. Blocking buffer: 3% nonfat dry milk in TBST. Detection: ECL Enhanced Kit. Exposure time: 30s.



Immunofluorescence - LAMC1 Polyclonal Antibody

Immunofluorescence analysis of rat brain using LAMC1 antibody at dilution of 1:100. Blue: DAPI



for nuclear staining.

# LAMC1 Polyclonal Antibody



Catalog Number: 162975

---

Immunofluorescence - LAMC1 Polyclonal Antibody

LAMC1 antibody at dilution of 1:100. Blue: DAPI for nuclear staining.

Immunofluorescence analysis of rat heart using