

CD11B Polyclonal Antibody

Catalog Number: 162835

Product name

CD11B Polyclonal Antibody

Specificity

Human, Mouse, Rat

Antibody description

Polyclonal antibody to CD11B

Preparation

Antigen: Recombinant fusion protein containing a sequence corresponding to amino acids 20-330 of human CD11B (NP_001139280.1).

Formulation

PBS with 0.02% sodium azide, 50% glycerol, pH7.3.

Storage

Store at -20°C. Avoid freeze / thaw cycles.

Clonality

Polyclonal

Ig Type

Rabbit IgG

Applications

WB, IHC, IF

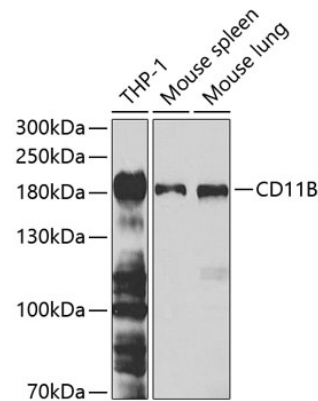
Dilutions

WB 1:500 - 1:2000

IHC 1:50 - 1:200

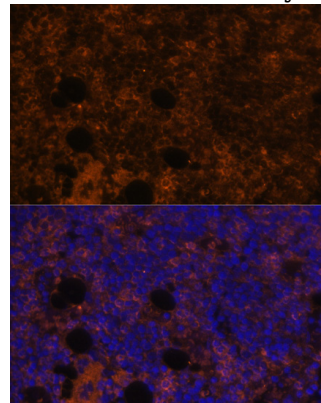
IF 1:50 - 1:200

Validations



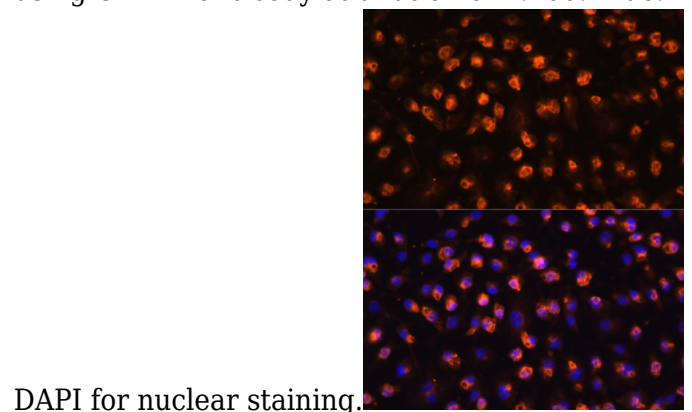
Western blot - CD11B Polyclonal Antibody

Western blot analysis of extracts of various cell lines, using CD11B antibody at 1:1000 dilution. Secondary antibody: HRP Goat Anti-Rabbit IgG (H+L) at 1:10000 dilution. Lysates/proteins: 25ug per lane. Blocking buffer: 3% nonfat dry milk in TBST.



Immunofluorescence - CD11B Polyclonal Antibody

Immunofluorescence analysis of rat bone marrow using CD11B antibody at dilution of 1:100. Blue:



DAPI for nuclear staining.

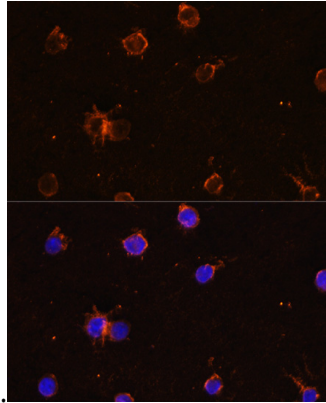
Immunofluorescence - CD11B Polyclonal Antibody

CD11B Polyclonal Antibody



Catalog Number: 162835

Immunofluorescence analysis of RAW264.7 cells using CD11B antibody at dilution of 1:100. Blue:



DAPI for nuclear staining.

Immunofluorescence - CD11B Polyclonal Antibody

Immunofluorescence analysis of THP-1 cells using CD11B antibody at dilution of 1:100. Blue: DAPI for nuclear staining.