

# Acetyl-Histone H2B-K15 pAb



Catalog Number: 162736

## Product name

Acetyl-Histone H2B-K15 pAb

## Specificity

Human, Mouse, Rat, Other (Wide Range)

## Antibody description

Polyclonal antibody to Acetyl-Histone H2B-K15

## Preparation

Antigen: AA synthetic acetylated peptide corresponding to residues surrounding K15 of human Histone H2B

## Formulation

PBS with 0.02% sodium azide, 50% glycerol, pH7.3.

## Storage

Store at -20°C. Avoid freeze / thaw cycles.

## Clonality

Polyclonal

## Ig Type

Rabbit IgG

## Applications

WB, IHC, IF, IP

## Dilutions

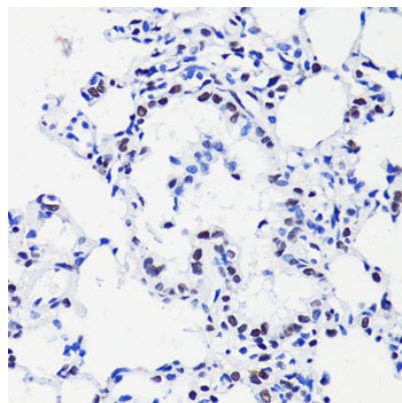
WB 1:500 - 1:2000

IHC 1:50 - 1:200

IF 1:50 - 1:100

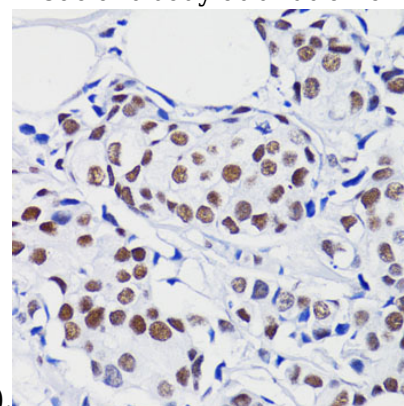
IP 1:50 - 1:200

## Validations



Immunohistochemistry - Acetyl-Histone H2B-K15 pAb

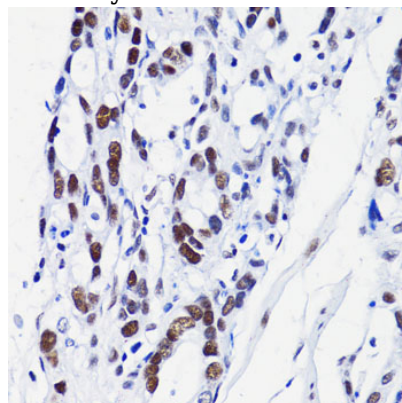
Immunohistochemistry of paraffin-embedded rat lung using H2B K15ac antibody at dilution of



1:100 (40x lens).

Immunohistochemistry - Acetyl-Histone H2B-K15 pAb

Immunohistochemistry of paraffin-embedded human mammary cancer using H2B K15ac antibody at dilution of 1:100 (40x lens).



Immunohistochemistry - Acetyl-Histone H2B-K15 pAb

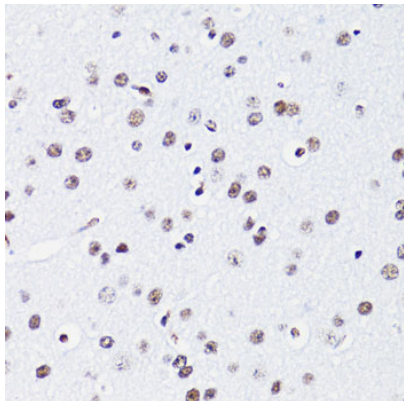
# Acetyl-Histone H2B-K15 pAb



Catalog Number: 162736

---

Immunohistochemistry of paraffin-embedded human gastric cancer using H2B K15ac antibody at dilution of 1:100 (40x lens).



Immunohistochemistry - Acetyl-Histone H2B-K15 pAb

Immunohistochemistry of paraffin-embedded mouse brain using H2B K15ac antibody at dilution of 1:100 (40x lens).