

# MYH2 Polyclonal Antibody



Catalog Number: 162560

## Product name

MYH2 Polyclonal Antibody

## Specificity

Human, Mouse, Rat

## Antibody description

Polyclonal antibody to MYH2

## Preparation

Antigen: A synthetic peptide corresponding to a sequence within amino acids 550-650 of human MYH2 (NP\_001093582.1).

## Formulation

PBS with 0.02% sodium azide, 50% glycerol, pH7.3.

## Storage

Store at -20°C. Avoid freeze / thaw cycles.

## Clonality

Polyclonal

## Ig Type

Rabbit IgG

## Applications

WB, IHC, IF

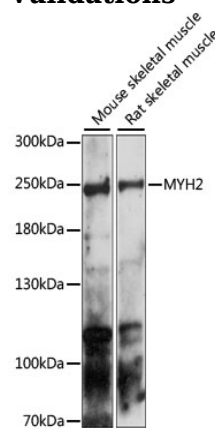
## Dilutions

WB 1:200 - 1:2000

IHC 1:50 - 1:200

IF 1:50 - 1:200

## Validations



Western blot - MYH2 Polyclonal Antibody

Western blot analysis of extracts of various cell lines, using MYH2 antibody at 1:1000 dilution. Secondary antibody: HRP Goat Anti-Rabbit IgG (H+L) at 1:10000 dilution. Lysates/proteins: 25ug per lane. Blocking buffer: 3% nonfat dry milk in TBST. Detection: ECL Enhanced Kit. Exposure time: 180s.