

PLA2G4D Polyclonal Antibody



Catalog Number: 162519

Product name

PLA2G4D Polyclonal Antibody

Specificity

Human

Antibody description

Polyclonal antibody to PLA2G4D

Preparation

Antigen: Recombinant fusion protein containing a sequence corresponding to amino acids 510-680 of human PLA2G4D (NP_828848.3).

Formulation

PBS with 0.02% sodium azide, 50% glycerol, pH7.3.

Storage

Store at -20°C. Avoid freeze / thaw cycles.

Clonality

Polyclonal

Ig Type

Rabbit IgG

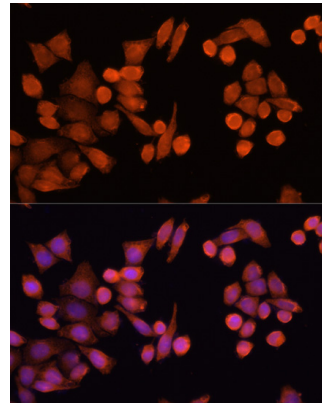
Applications

IF

Dilutions

IF 1:50 - 1:200

Validations



Immunofluorescence - PLA2G4D Polyclonal Antibody

Immunofluorescence analysis of HeLa cells using PLA2G4D antibody at dilution of 1:100 (40x lens). Blue: DAPI for nuclear staining.