

LSM11 Polyclonal Antibody



Catalog Number: 162507

Product name

LSM11 Polyclonal Antibody

Specificity

Human

Antibody description

Polyclonal antibody to LSM11

Preparation

Antigen: Recombinant fusion protein containing a sequence corresponding to amino acids 131-360 of human LSM11 (NP_775762.1).

Formulation

PBS with 0.02% sodium azide, 50% glycerol, pH7.3.

Storage

Store at -20°C. Avoid freeze / thaw cycles.

Clonality

Polyclonal

Ig Type

Rabbit IgG

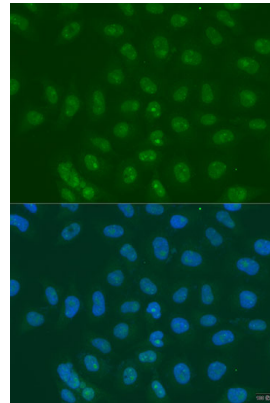
Applications

IF

Dilutions

IF 1:50 - 1:200

Validations



Immunofluorescence - LSM11 Polyclonal Antibody

Immunofluorescence analysis of U2OS cells using LSM11 antibody at dilution of 1:100. Blue: DAPI for nuclear staining.