

# TMX1 Polyclonal Antibody



Catalog Number: 162352

## Product name

TMX1 Polyclonal Antibody

## Specificity

Human, Mouse, Rat

## Antibody description

Polyclonal antibody to TMX1

## Preparation

Antigen: Recombinant fusion protein containing a sequence corresponding to amino acids 210-280 of human TMX1 (NP\_110382.3).

## Formulation

PBS with 0.02% sodium azide, 50% glycerol, pH7.3.

## Storage

Store at -20°C. Avoid freeze / thaw cycles.

## Clonality

Polyclonal

## Ig Type

Rabbit IgG

## Applications

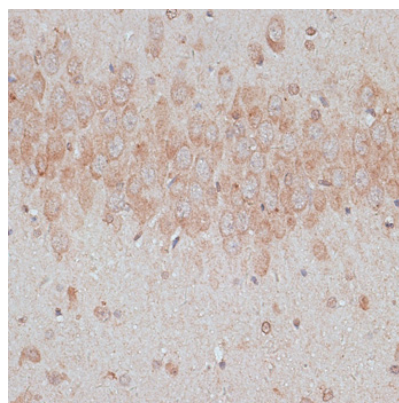
WB, IHC

## Dilutions

WB 1:500 - 1:2000

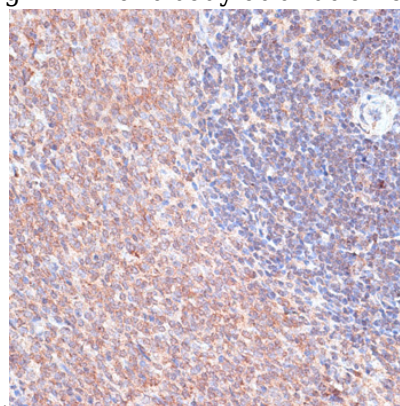
IHC 1:50 - 1:200

## Validations



Immunohistochemistry - TMX1 Polyclonal Antibody

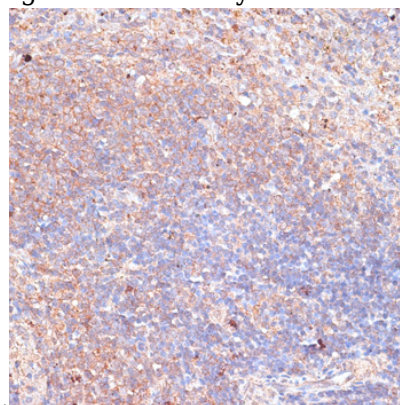
Immunohistochemistry of paraffin-embedded rat brain using TMX1 antibody at dilution of 1:100



(40x lens).

Immunohistochemistry - TMX1 Polyclonal Antibody

Immunohistochemistry of paraffin-embedded rat spleen using TMX1 antibody at dilution of 1:100



(40x lens).

Immunohistochemistry - TMX1 Polyclonal Antibody

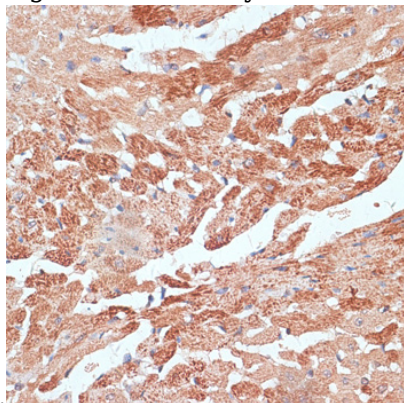
# TMX1 Polyclonal Antibody



Catalog Number: 162352

---

Immunohistochemistry of paraffin-embedded mouse spleen using TMX1 antibody at dilution of



1:100 (40x lens).

Immunohistochemistry - TMX1 Polyclonal Antibody

Immunohistochemistry of paraffin-embedded mouse heart using TMX1 antibody at dilution of 1:100 (40x lens).