

# PSIP1 Polyclonal Antibody



Catalog Number: 162298

## Product name

PSIP1 Polyclonal Antibody

WB 1:500 - 1:2000

IHC 1:50 - 1:200

## Specificity

Human, Mouse, Rat

## Antibody description

Polyclonal antibody to PSIP1

## Preparation

Antigen: Recombinant fusion protein containing a sequence corresponding to amino acids 301-530 of human PSIP1 (NP\_150091.2).

## Formulation

PBS with 0.02% sodium azide, 50% glycerol, pH7.3.

## Storage

Store at -20°C. Avoid freeze / thaw cycles.

## Clonality

Polyclonal

## Ig Type

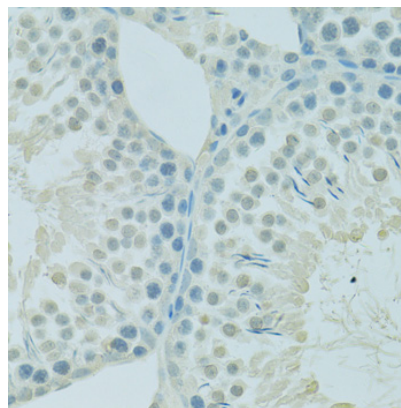
Rabbit IgG

## Applications

WB, IHC

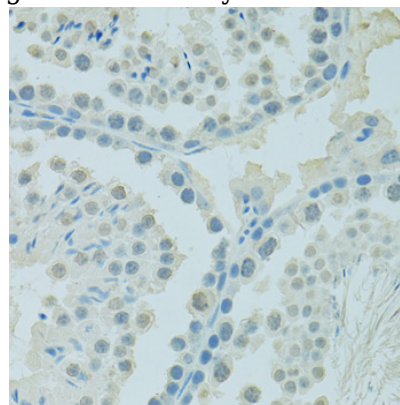
## Dilutions

## Validations



Immunohistochemistry - PSIP1 Polyclonal Antibody

Immunohistochemistry of paraffin-embedded rat testis using PSIP1 antibody at dilution of 1:100



(40x lens).

Immunohistochemistry - PSIP1 Polyclonal Antibody

Immunohistochemistry of paraffin-embedded mouse testis using PSIP1 antibody at dilution of 1:100 (40x lens).