

ERLIN1 Polyclonal Antibody



Catalog Number: 162293

Product name

ERLIN1 Polyclonal Antibody

Specificity

Human, Mouse, Rat

Antibody description

Polyclonal antibody to ERLIN1

Preparation

Antigen: Recombinant fusion protein containing a sequence corresponding to amino acids 259-348 of human ERLIN1 (NP_006450.2).

Formulation

PBS with 0.02% sodium azide, 50% glycerol, pH7.3.

Storage

Store at -20°C. Avoid freeze / thaw cycles.

Clonality

Polyclonal

Ig Type

Rabbit IgG

Applications

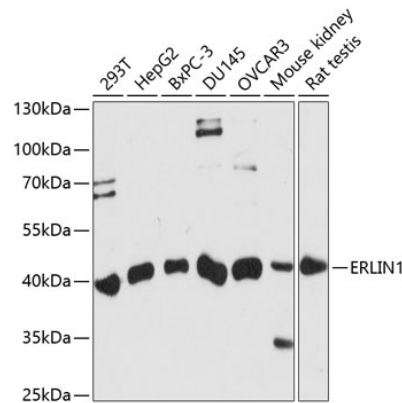
WB, IHC

Dilutions

WB 1:500 - 1:2000

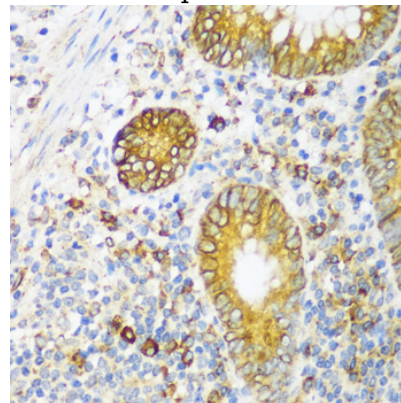
IHC 1:50 - 1:200

Validations



Western blot - ERLIN1 Polyclonal Antibody

Western blot analysis of extracts of various cell lines, using ERLIN1 antibody at 1:1000 dilution. Secondary antibody: HRP Goat Anti-Rabbit IgG (H+L) at 1:10000 dilution. Lysates/proteins: 25ug per lane. Blocking buffer: 3% nonfat dry milk in TBST. Detection: ECL Basic Kit. Exposure time: 90s.



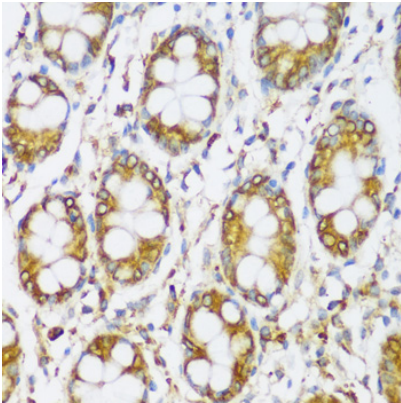
Immunohistochemistry - ERLIN1 Polyclonal Antibody

Immunohistochemistry of paraffin-embedded human appendix using ERLIN1 antibody at dilution of 1:100 (40x lens).

ERLIN1 Polyclonal Antibody

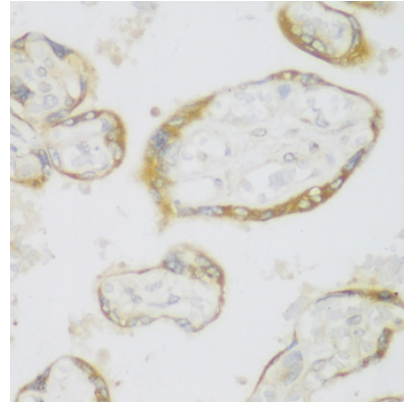


Catalog Number: 162293



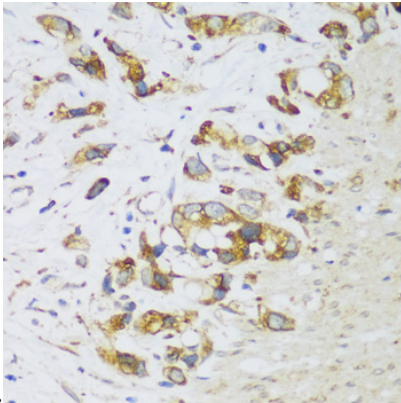
Immunohistochemistry - ERLIN1 Polyclonal Antibody

Immunohistochemistry of paraffin-embedded human liver cancer using ERLIN1 antibody at dilution of 1:100 (40x lens).



Immunohistochemistry - ERLIN1 Polyclonal Antibody

Immunohistochemistry of paraffin-embedded human colon using ERLIN1 antibody at dilution of



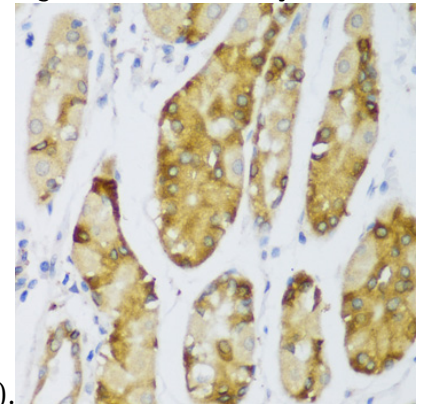
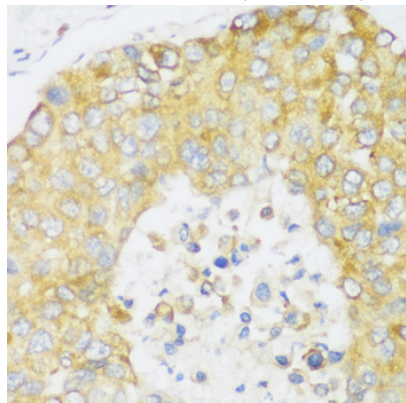
Immunohistochemistry - ERLIN1 Polyclonal Antibody

Immunohistochemistry of paraffin-embedded human placenta using ERLIN1 antibody at dilution

1:100 (40x lens).

Immunohistochemistry - ERLIN1 Polyclonal Antibody

Immunohistochemistry of paraffin-embedded human gastric cancer using ERLIN1 antibody at dilution of 1:100 (40x lens).



of 1:100 (40x lens).

Immunohistochemistry - ERLIN1 Polyclonal Antibody

Immunohistochemistry of paraffin-embedded human stomach using ERLIN1 antibody at dilution of 1:100 (40x lens).