

# BrdU Monoclonal Antibody



Catalog Number: 162277

## Product name

BrdU Monoclonal Antibody

IHC 1:50 - 1:500

ICC 1:50 - 1:500

IF 1:50 - 1:500

## Specificity

ALL

## Antibody description

Monoclonal antibody to BrdU

## Preparation

Antigen: Bromodeoxyuridine

## Formulation

PBS with 0.02% sodium azide, 50% glycerol, pH7.3.

## Storage

Store at -20°C. Avoid freeze / thaw cycles.

## Clonality

Monoclonal

## Ig Type

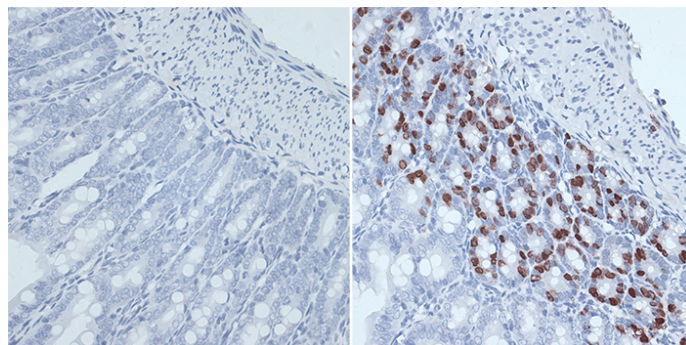
Mouse IgG1

## Applications

IHC, ICC, IF

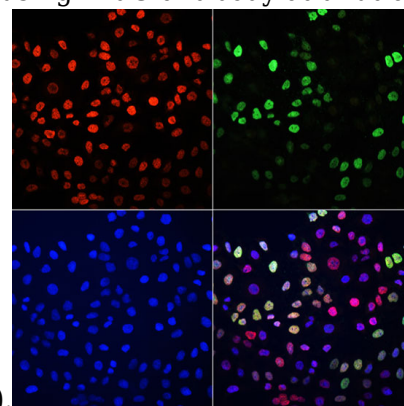
## Dilutions

## Validations



Immunohistochemistry - BrdU Monoclonal Antibody

Immunohistochemistry of paraffin-embedded mouse jejunum using BrdU antibody at dilution of



1:300 (40x lens).

Immunofluorescence - BrdU Monoclonal Antibody

Immunofluorescence analysis of HeLa cells using BrdU antibody (Green) and TriMethyl-Histone H3-K27 antibody (Red). Blue: DAPI for nuclear staining.