

P Glycoprotein Polyclonal Antibody



Catalog Number: 162250

Product name

P Glycoprotein Polyclonal Antibody

Specificity

Mouse, Rat

Antibody description

Polyclonal antibody to P Glycoprotein

Preparation

Antigen: A synthetic peptide corresponding to a sequence within amino acids 600-700 of human P Glycoprotein (NP_000918.2).

Formulation

PBS with 0.02% sodium azide, 50% glycerol, pH7.3.

Storage

Store at -20°C. Avoid freeze / thaw cycles.

Clonality

Polyclonal

Ig Type

Rabbit IgG

Applications

WB, IHC, IF

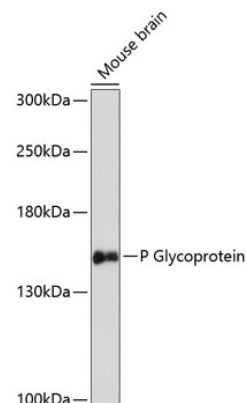
Dilutions

WB 1:500 - 1:2000

IHC 1:50 - 1:200

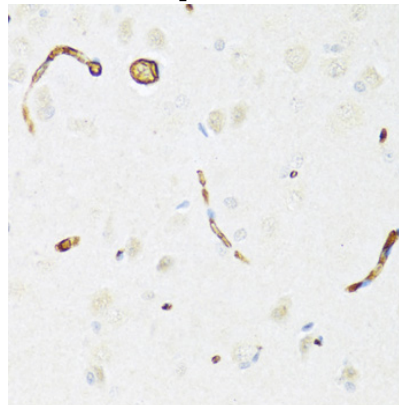
IF 1:50 - 1:200

Validations



Western blot - P Glycoprotein Polyclonal Antibody

Western blot analysis of extracts of mouse brain, using P Glycoprotein antibody at 1:3000 dilution. Secondary antibody: HRP Goat Anti-Rabbit IgG (H+L) at 1:10000 dilution. Lysates/proteins: 25ug per lane. Blocking buffer: 3% nonfat dry milk in TBST. Detection: ECL Basic Kit. Exposure time: 90s.



Immunohistochemistry - P Glycoprotein Polyclonal Antibody

Immunohistochemistry of paraffin-embedded rat brain using P Glycoprotein antibody at dilution of 1:100 (40x lens).