

# SMAD6 Polyclonal Antibody



Catalog Number: 162242

## Product name

SMAD6 Polyclonal Antibody

WB 1:500 - 1:2000

IHC 1:50 - 1:200

IF 1:50 - 1:200

## Specificity

Human, Mouse, Rat

## Antibody description

Polyclonal antibody to SMAD6

## Preparation

Antigen: Recombinant fusion protein containing a sequence corresponding to amino acids 257-496 of human SMAD6 (NP\_005576.3).

## Formulation

PBS with 0.02% sodium azide, 50% glycerol, pH7.3.

## Storage

Store at -20°C. Avoid freeze / thaw cycles.

## Clonality

Polyclonal

## Ig Type

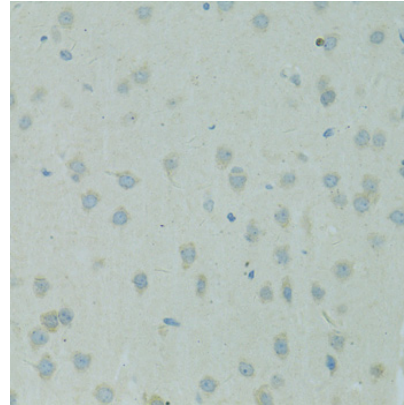
Rabbit IgG

## Applications

WB, IHC, IF

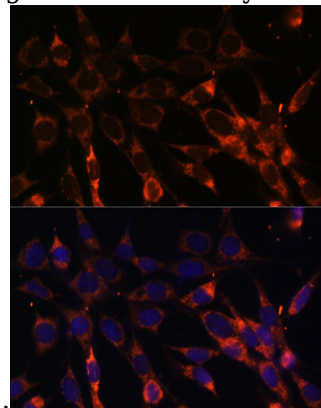
## Dilutions

## Validations



Immunohistochemistry - SMAD6 Polyclonal Antibody

Immunohistochemistry of paraffin-embedded rat brain using SMAD6 antibody at dilution of 1:100



(40x lens).

Immunofluorescence - SMAD6 Polyclonal Antibody

Immunofluorescence analysis of NIH-3T3 cells using SMAD6 antibody at dilution of 1:100. Blue: DAPI for nuclear staining.