

# COX15 Polyclonal Antibody



Catalog Number: 162204

## Product name

COX15 Polyclonal Antibody

## Specificity

Human, Mouse, Rat

## Antibody description

Polyclonal antibody to COX15

## Preparation

Antigen: A synthetic peptide corresponding to a sequence within amino acids 150-250 of human COX15 (NP\_510870.1).

## Formulation

PBS with 0.02% sodium azide, 50% glycerol, pH7.3.

## Storage

Store at -20°C. Avoid freeze / thaw cycles.

## Clonality

Polyclonal

## Ig Type

Rabbit IgG

## Applications

WB, IHC, IF

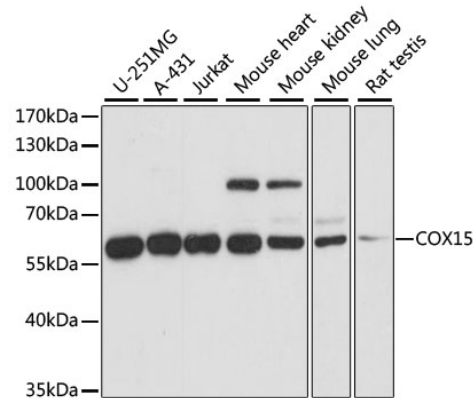
## Dilutions

WB 1:500 - 1:2000

IHC 1:50 - 1:100

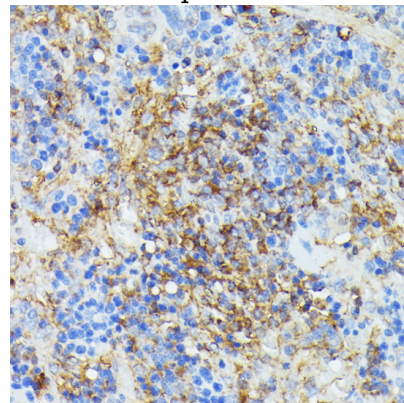
IF 1:50 - 1:100

## Validations



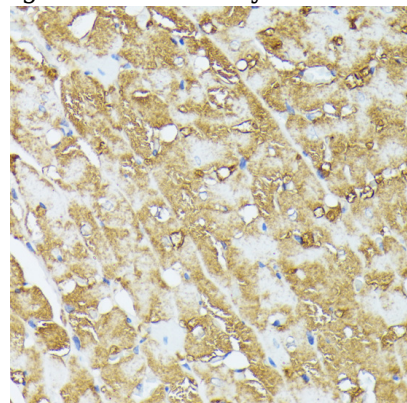
Western blot - COX15 Polyclonal Antibody

Western blot analysis of extracts of various cell lines, using COX15 antibody at 1:1000 dilution. Secondary antibody: HRP Goat Anti-Rabbit IgG (H+L) at 1:10000 dilution. Lysates/proteins: 25ug per lane. Blocking buffer: 3% nonfat dry milk in TBST. Detection: ECL Basic Kit. Exposure time: 5s.



Immunohistochemistry - COX15 Polyclonal Antibody

Immunohistochemistry of paraffin-embedded rat spleen using COX15 antibody at dilution of 1:100



(40x lens).

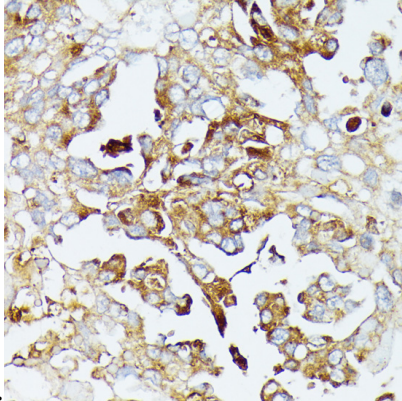
# COX15 Polyclonal Antibody



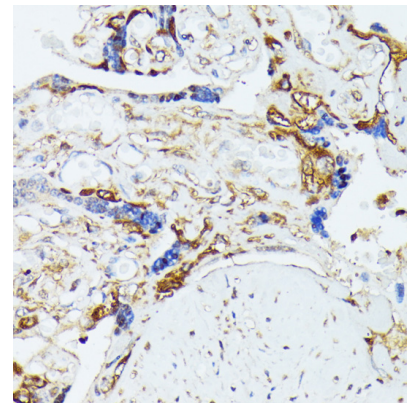
Catalog Number: 162204

## Immunohistochemistry - COX15 Polyclonal Antibody

Immunohistochemistry of paraffin-embedded rat heart using COX15 antibody at dilution of 1:100

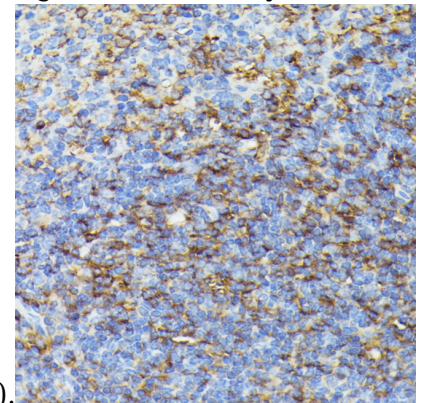


(40x lens).



## Immunohistochemistry - COX15 Polyclonal Antibody

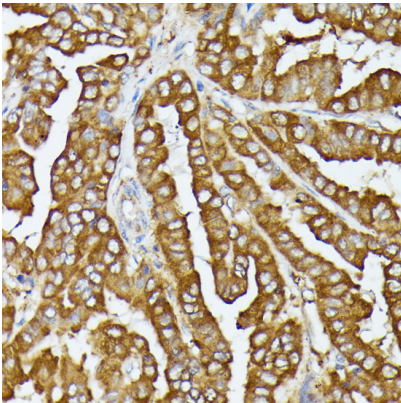
Immunohistochemistry of paraffin-embedded human placenta using COX15 antibody at dilution



of 1:100 (40x lens).

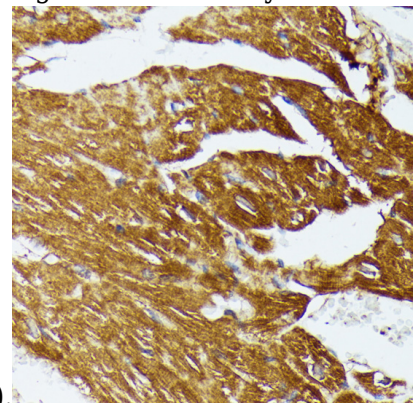
## Immunohistochemistry - COX15 Polyclonal Antibody

Immunohistochemistry of paraffin-embedded human lung cancer using COX15 antibody at dilution of 1:100 (40x lens).



## Immunohistochemistry - COX15 Polyclonal Antibody

Immunohistochemistry of paraffin-embedded mouse spleen using COX15 antibody at dilution of



1:100 (40x lens).

## Immunohistochemistry - COX15 Polyclonal Antibody

Immunohistochemistry of paraffin-embedded human thyroid cancer using COX15 antibody at dilution of 1:100 (40x lens).

## Immunohistochemistry - COX15 Polyclonal Antibody

# COX15 Polyclonal Antibody



Catalog Number: 162204

---

Immunohistochemistry of paraffin-embedded

mouse heart using COX15 antibody at dilution of 1:100 (40x lens).