

NDUFAB1 Polyclonal Antibody



Catalog Number: 162200

Product name

NDUFAB1 Polyclonal Antibody

Specificity

Human, Mouse

Antibody description

Polyclonal antibody to NDUFAB1

Preparation

Antigen: A synthetic peptide corresponding to a sequence within amino acids 50-150 of human NDUFAB1 (NP_004994.1).

Formulation

PBS with 0.02% sodium azide, 50% glycerol, pH7.3.

Storage

Store at -20°C. Avoid freeze / thaw cycles.

Clonality

Polyclonal

Ig Type

Rabbit IgG

Applications

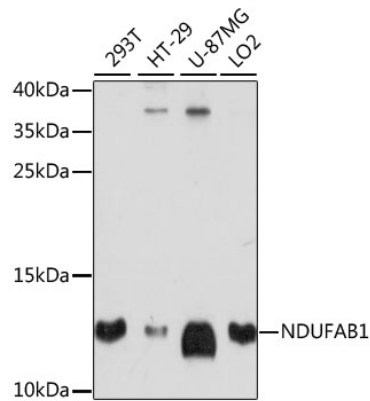
WB, IHC

Dilutions

WB 1:500 - 1:2000

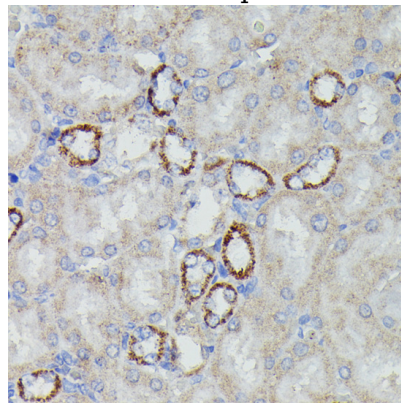
IHC 1:50 - 1:200

Validations



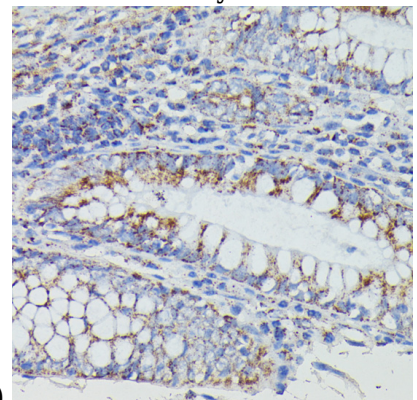
Western blot - NDUFAB1 Polyclonal Antibody

Western blot analysis of extracts of various cell lines, using NDUFAB1 antibody at 1:1000 dilution. Secondary antibody: HRP Goat Anti-Rabbit IgG (H+L) at 1:10000 dilution. Lysates/proteins: 25ug per lane. Blocking buffer: 3% nonfat dry milk in TBST. Detection: ECL Enhanced Kit. Exposure time: 90s.



Immunohistochemistry - NDUFAB1 Polyclonal Antibody

Immunohistochemistry of paraffin-embedded rat kidney using NDUFAB1 antibody at dilution of



1:100 (40x lens).

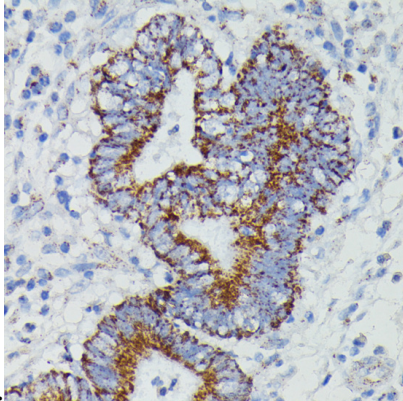
NDUFAB1 Polyclonal Antibody



Catalog Number: 162200

Immunohistochemistry - NDUFAB1 Polyclonal Antibody

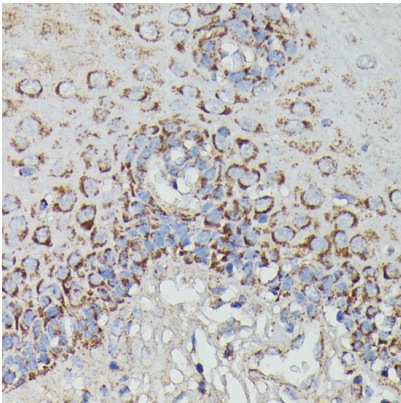
Immunohistochemistry of paraffin-embedded human colon using NDUFAB1 antibody at dilution



of 1:100 (40x lens).

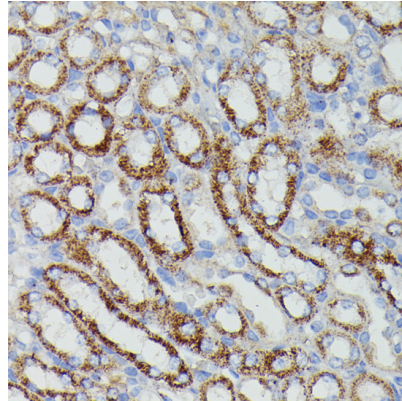
Immunohistochemistry - NDUFAB1 Polyclonal Antibody

Immunohistochemistry of paraffin-embedded human colon carcinoma using NDUFAB1 antibody at dilution of 1:100 (40x lens).



Immunohistochemistry - NDUFAB1 Polyclonal Antibody

Immunohistochemistry of paraffin-embedded human esophageal using NDUFAB1 antibody at dilution of 1:100 (40x lens).



Immunohistochemistry - NDUFAB1 Polyclonal Antibody

Immunohistochemistry of paraffin-embedded mouse kidney using NDUFAB1 antibody at dilution of 1:100 (40x lens).