

# SLC2A9 Polyclonal Antibody



Catalog Number: 162173

## Product name

SLC2A9 Polyclonal Antibody

## Specificity

Human, Mouse, Rat

## Antibody description

Polyclonal antibody to SLC2A9

## Preparation

Antigen: A synthetic peptide corresponding to a sequence within amino acids 400-500 of human SLC2A9 (NP\_001001290.1).

## Formulation

PBS with 0.02% sodium azide, 50% glycerol, pH7.3.

## Storage

Store at -20°C. Avoid freeze / thaw cycles.

## Clonality

Polyclonal

## Ig Type

Rabbit IgG

## Applications

WB, IHC, IF

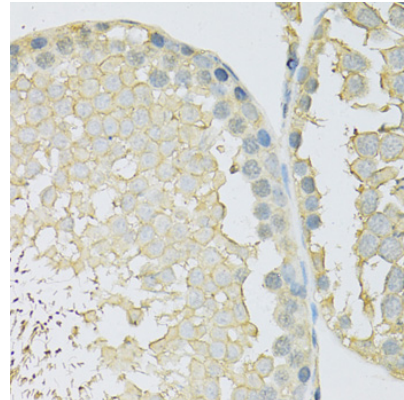
## Dilutions

WB 1:500 - 1:2000

IHC 1:50 - 1:200

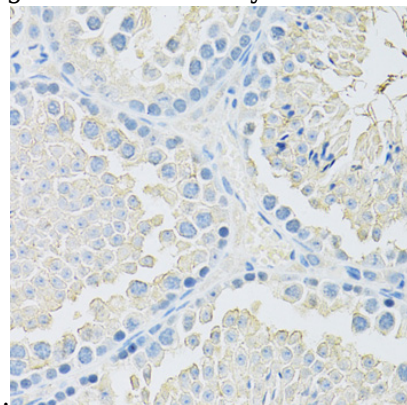
IF 1:50 - 1:200

## Validations



Immunohistochemistry - SLC2A9 Polyclonal Antibody

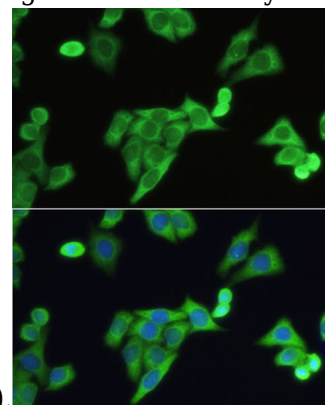
Immunohistochemistry of paraffin-embedded rat testis using SLC2A9 antibody at dilution of 1:100



(40x lens).

Immunohistochemistry - SLC2A9 Polyclonal Antibody

Immunohistochemistry of paraffin-embedded mouse testis using SLC2A9 antibody at dilution of



1:100 (40x lens).

Immunofluorescence - SLC2A9 Polyclonal Antibody

# SLC2A9 Polyclonal Antibody



Catalog Number: 162173

---

Immunofluorescence analysis of HeLa cells using

SLC2A9 antibody at dilution of 1:100. Blue: DAPI for nuclear staining.