

SNRPD1 Polyclonal Antibody



Catalog Number: 162112

Product name

SNRPD1 Polyclonal Antibody

Specificity

Mouse

Antibody description

Polyclonal antibody to SNRPD1

Preparation

Antigen: A synthetic peptide corresponding to a sequence within amino acids 1-100 of human SNRPD1 (NP_008869.1).

Formulation

PBS with 0.02% sodium azide, 50% glycerol, pH7.3.

Storage

Store at -20°C. Avoid freeze / thaw cycles.

Clonality

Polyclonal

Ig Type

Rabbit IgG

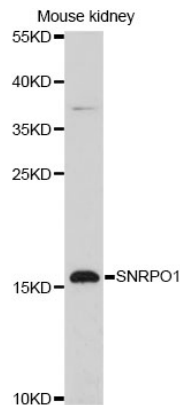
Applications

WB

Dilutions

WB 1:500 - 1:2000

Validations



Western blot - SNRPD1 Polyclonal Antibody

Western blot analysis of extracts of mouse kidney, using SNRPD1 antibody at 1:3000 dilution. Secondary antibody: HRP Goat Anti-Rabbit IgG (H+L) at 1:10000 dilution. Lysates/proteins: 25ug per lane. Blocking buffer: 3% nonfat dry milk in TBST. Detection: ECL Basic Kit. Exposure time: 90s.