

BRIX1 Polyclonal Antibody

Catalog Number: 162106

Product name

BRIX1 Polyclonal Antibody

Specificity

Human, Mouse, Rat

Antibody description

Polyclonal antibody to BRIX1

Preparation

Antigen: Recombinant fusion protein containing a sequence corresponding to amino acids 1-353 of human BRIX1 (NP_060791.3).

Formulation

PBS with 0.02% sodium azide, 50% glycerol, pH7.3.

Storage

Store at -20°C. Avoid freeze / thaw cycles.

Clonality

Polyclonal

Ig Type

Rabbit IgG

Applications

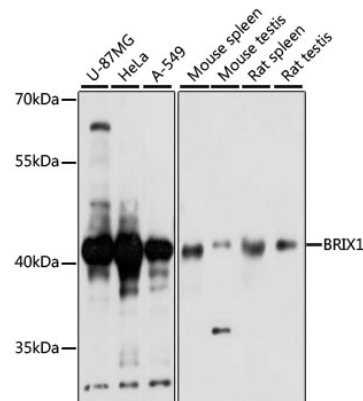
WB, IHC

Dilutions

WB 1:500 - 1:2000

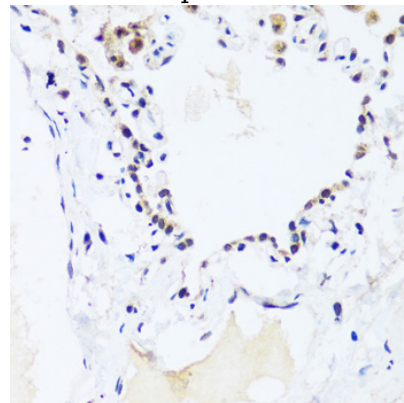
IHC 1:50 - 1:100

Validations



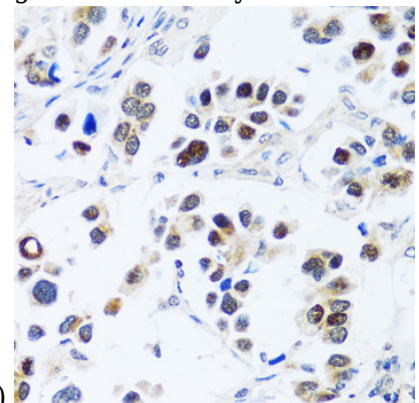
Western blot - BRIX1 Polyclonal Antibody

Western blot analysis of extracts of various cell lines, using BRIX1 antibody at 1:1000 dilution. Secondary antibody: HRP Goat Anti-Rabbit IgG (H+L) at 1:10000 dilution. Lysates/proteins: 25ug per lane. Blocking buffer: 3% nonfat dry milk in TBST. Detection: ECL Basic Kit. Exposure time: 1s.



Immunohistochemistry - BRIX1 Polyclonal Antibody

Immunohistochemistry of paraffin-embedded human lung using BRIX1 antibody at dilution of



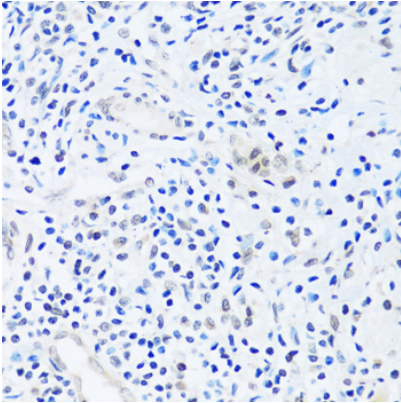
1:100 (40x lens).

BRIX1 Polyclonal Antibody

Catalog Number: 162106

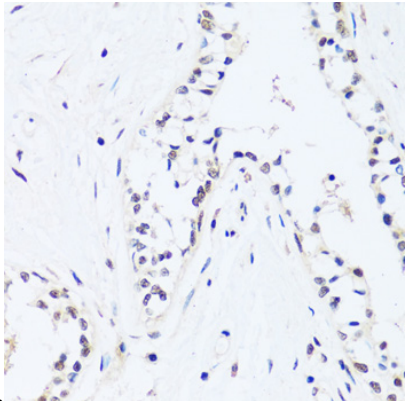
Immunohistochemistry - BRIX1 Polyclonal Antibody

Immunohistochemistry of paraffin-embedded human lung cancer using BRIX1 antibody at dilution of 1:100 (40x lens).



Immunohistochemistry - BRIX1 Polyclonal Antibody

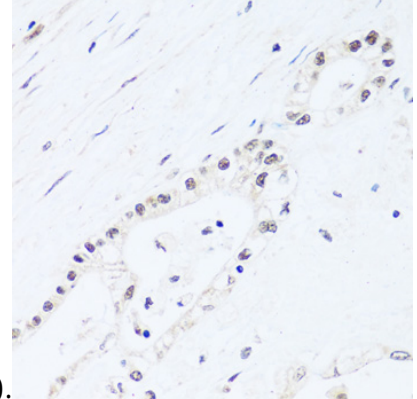
Immunohistochemistry of paraffin-embedded human appendix using BRIX1 antibody at dilution



of 1:100 (40x lens).

Immunohistochemistry - BRIX1 Polyclonal Antibody

Immunohistochemistry of paraffin-embedded human breast using BRIX1 antibody at dilution of



1:100 (40x lens).

Immunohistochemistry - BRIX1 Polyclonal Antibody

Immunohistochemistry of paraffin-embedded human gastric cancer using BRIX1 antibody at dilution of 1:100 (40x lens).