

CNR1 Polyclonal Antibody



Catalog Number: 162101

Product name

CNR1 Polyclonal Antibody

Specificity

Human, Mouse, Rat

Antibody description

Polyclonal antibody to CNR1

Preparation

Antigen: Recombinant fusion protein containing a sequence corresponding to amino acids 1-120 of human CNR1 (NP_001153731.1).

Formulation

PBS with 0.02% sodium azide, 50% glycerol, pH7.3.

Storage

Store at -20°C. Avoid freeze / thaw cycles.

Clonality

Polyclonal

Ig Type

Rabbit IgG

Applications

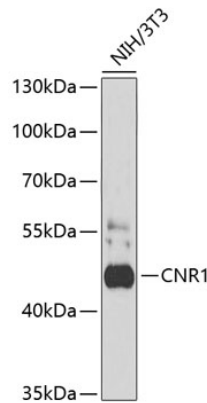
WB, IHC

Dilutions

WB 1:500 - 1:2000

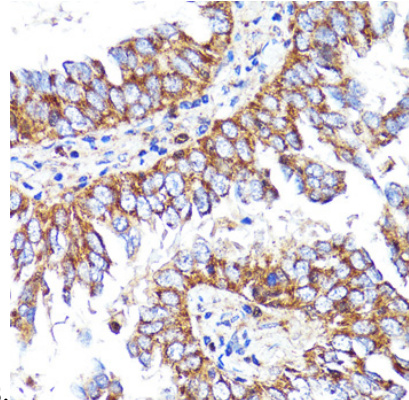
IHC 1:50 - 1:100

Validations



Western blot - CNR1 Polyclonal Antibody

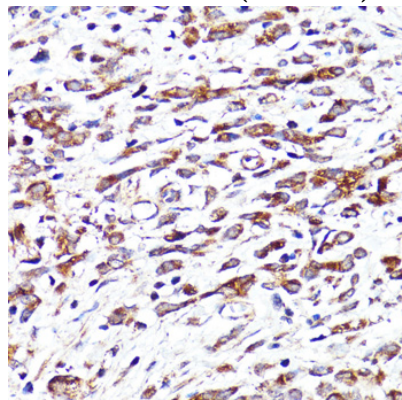
Western blot analysis of extracts of NIH3T3 cells, using CNR1 antibody at 1:1000 dilution. Secondary antibody: HRP Goat Anti-Rabbit IgG (H+L) at 1:10000 dilution. Lysates/proteins: 25ug per lane. Blocking buffer: 3% nonfat dry milk in TBST. Detection: ECL Enhanced Kit. Exposure



time: 60s.

Immunohistochemistry - CNR1 Polyclonal Antibody

Immunohistochemistry of paraffin-embedded human lung cancer using CNR1 antibody at dilution of 1:150 (40x lens).

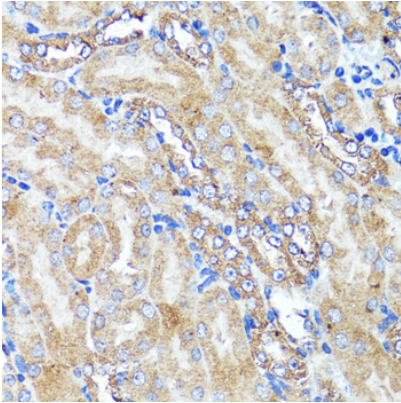


CNR1 Polyclonal Antibody

Catalog Number: 162101

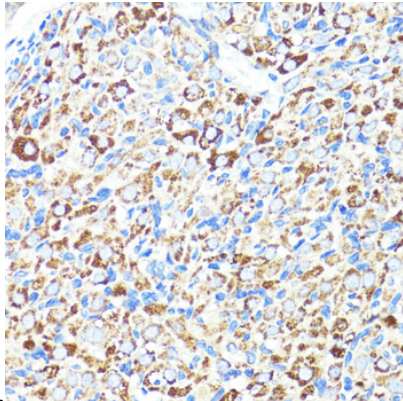
Immunohistochemistry - CNR1 Polyclonal Antibody

Immunohistochemistry of paraffin-embedded human stomach cancer using CNR1 antibody at dilution of 1:150 (40x lens).



Immunohistochemistry - CNR1 Polyclonal Antibody

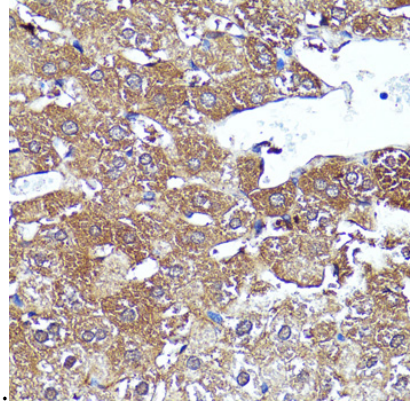
Immunohistochemistry of paraffin-embedded mouse kidney using CNR1 antibody at dilution of



1:150 (40x lens).

Immunohistochemistry - CNR1 Polyclonal Antibody

Immunohistochemistry of paraffin-embedded rat ovary using CNR1 antibody at dilution of 1:150



(40x lens).

Immunohistochemistry - CNR1 Polyclonal Antibody

Immunohistochemistry of paraffin-embedded rat liver using CNR1 antibody at dilution of 1:150 (40x lens).