

ATP6V1G3 Polyclonal Antibody



Catalog Number: 162092

Product name

ATP6V1G3 Polyclonal Antibody

Specificity

Mouse

Antibody description

Polyclonal antibody to ATP6V1G3

Preparation

Antigen: Recombinant fusion protein containing a sequence corresponding to amino acids 1-118 of human ATP6V1G3 (NP_573569.1).

Formulation

PBS with 0.02% sodium azide, 50% glycerol, pH7.3.

Storage

Store at -20°C. Avoid freeze / thaw cycles.

Clonality

Polyclonal

Ig Type

Rabbit IgG

Applications

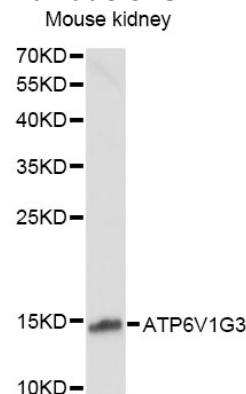
WB, IHC

Dilutions

WB 1:500 - 1:2000

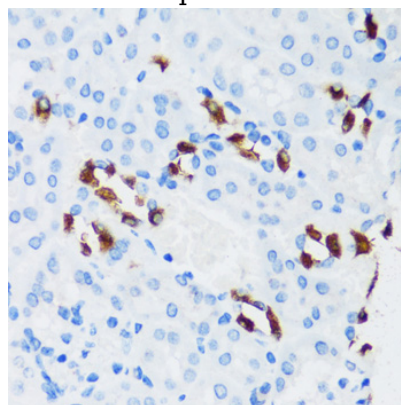
IHC 1:50 - 1:100

Validations



Western blot - ATP6V1G3 Polyclonal Antibody

Western blot analysis of extracts of mouse kidney, using ATP6V1G3 antibody at 1:1000 dilution. Secondary antibody: HRP Goat Anti-Rabbit IgG (H+L) at 1:10000 dilution. Lysates/proteins: 25ug per lane. Blocking buffer: 3% nonfat dry milk in TBST. Detection: ECL Basic Kit. Exposure time: 90s.



Immunohistochemistry - ATP6V1G3 Polyclonal Antibody

Immunohistochemistry of paraffin-embedded mouse kidney using ATP6V1G3 antibody at dilution of 1:100 (40x lens).