

CYP11B2 Polyclonal Antibody

Catalog Number: 162080

Product name

CYP11B2 Polyclonal Antibody

Specificity

Human, Mouse, Rat

Antibody description

Polyclonal antibody to CYP11B2

Preparation

Antigen: Recombinant fusion protein containing a sequence corresponding to amino acids 234-503 of human CYP11B2 (NP_000489.3).

Formulation

PBS with 0.02% sodium azide, 50% glycerol, pH7.3.

Storage

Store at -20°C. Avoid freeze / thaw cycles.

Clonality

Polyclonal

Ig Type

Rabbit IgG

Applications

WB, IHC, IF

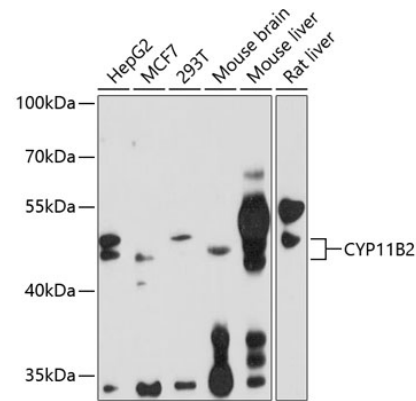
Dilutions

WB 1:500 - 1:1000

IHC 1:50 - 1:100

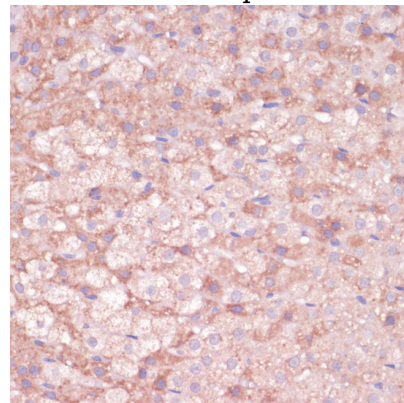
IF 1:50 - 1:100

Validations



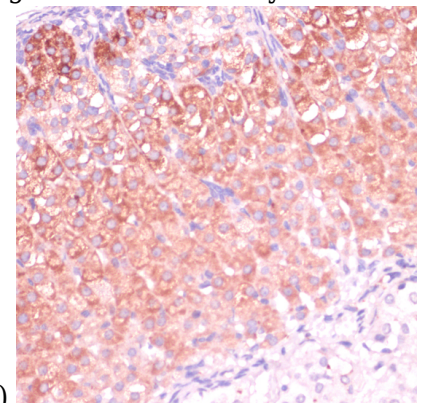
Western blot - CYP11B2 Polyclonal Antibody

Western blot analysis of extracts of various cell lines, using CYP11B2 antibody at 1:1000 dilution. Secondary antibody: HRP Goat Anti-Rabbit IgG (H+L) at 1:10000 dilution. Lysates/proteins: 25ug per lane. Blocking buffer: 3% nonfat dry milk in TBST. Detection: ECL Enhanced Kit. Exposure time: 20s.



Immunohistochemistry - CYP11B2 Polyclonal Antibody

Immunohistochemistry of paraffin-embedded rat adrenal gland using CYP11B2 antibody at dilution



of 1:100 (40x lens).

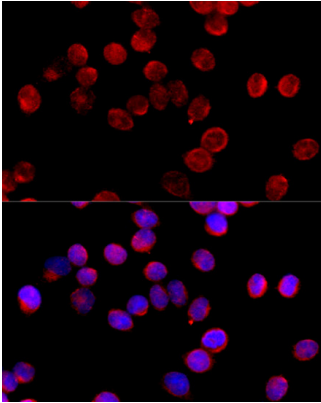
CYP11B2 Polyclonal Antibody



Catalog Number: 162080

Immunohistochemistry - CYP11B2 Polyclonal Antibody

Immunohistochemistry of paraffin-embedded mouse adrenal gland using CYP11B2 antibody at dilution of 1:100 (40x lens).



Immunofluorescence - CYP11B2 Polyclonal Antibody

Immunofluorescence analysis of HeLa cells using CYP11B2 antibody at dilution of 1:100 (40x lens). Blue: DAPI for nuclear staining.