

SPDEF Polyclonal Antibody



Catalog Number: 161931

Product name

SPDEF Polyclonal Antibody

Specificity

Human, Mouse, Rat

Antibody description

Polyclonal antibody to SPDEF

Preparation

Antigen: Recombinant fusion protein containing a sequence corresponding to amino acids 1-335 of human SPDEF (NP_036523.1).

Formulation

PBS with 0.02% sodium azide, 50% glycerol, pH7.3.

Storage

Store at -20°C. Avoid freeze / thaw cycles.

Clonality

Polyclonal

Ig Type

Rabbit IgG

Applications

WB, IHC, IF

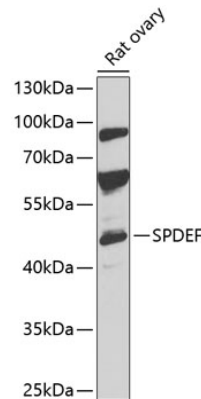
Dilutions

WB 1:500 - 1:1000

IHC 1:50 - 1:200

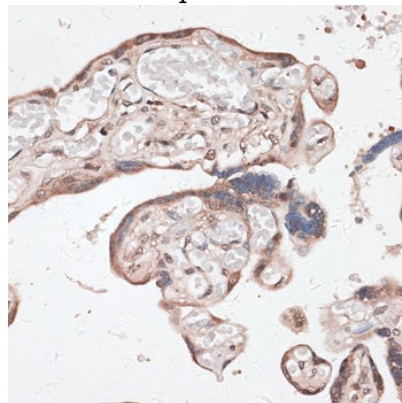
IF 1:50 - 1:100

Validations



Western blot - SPDEF Polyclonal Antibody

Western blot analysis of extracts of rat ovary, using SPDEF antibody at 1:1000 dilution. Secondary antibody: HRP Goat Anti-Rabbit IgG (H+L) at 1:10000 dilution. Lysates/proteins: 25ug per lane. Blocking buffer: 3% nonfat dry milk in TBST. Detection: ECL Basic Kit. Exposure time: 30s.



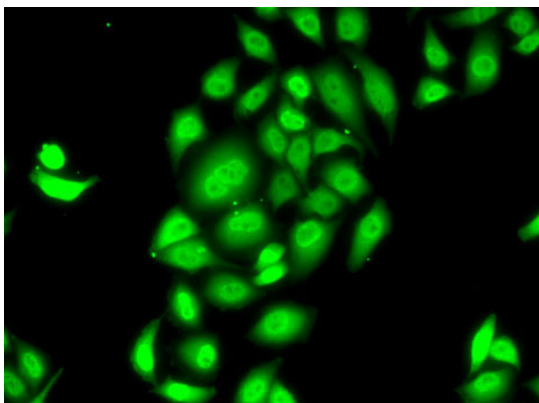
Immunohistochemistry - SPDEF Polyclonal Antibody

Immunohistochemistry of paraffin-embedded human placenta using SPDEF antibody at dilution of 1:100 (40x lens).

SPDEF Polyclonal Antibody



Catalog Number: 161931



Immunofluorescence - SPDEF Polyclonal Antibody

Immunofluorescence analysis of MCF7 cells using SPDEF antibody .