

DMD Polyclonal Antibody

Catalog Number: 161929

Product name

DMD Polyclonal Antibody

Specificity

Human, Mouse, Rat

Antibody description

Polyclonal antibody to DMD

Preparation

Antigen: Recombinant fusion protein containing a sequence corresponding to amino acids 346-635 of human DMD (NP_004007.1).

Formulation

PBS with 0.02% sodium azide, 50% glycerol, pH7.3.

Storage

Store at -20°C. Avoid freeze / thaw cycles.

Clonality

Polyclonal

Ig Type

Rabbit IgG

Applications

WB, IHC, IF

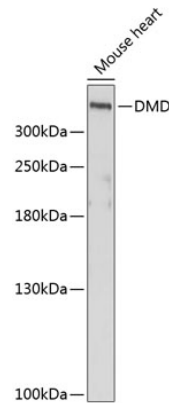
Dilutions

WB 1:200 - 1:2000

IHC 1:50 - 1:200

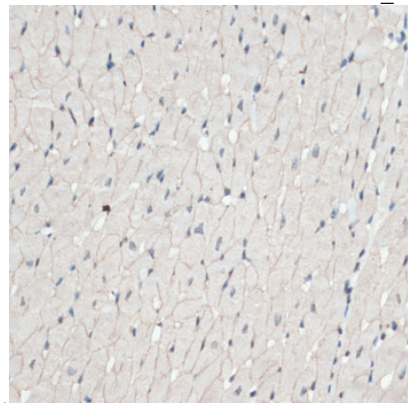
IF 1:50 - 1:200

Validations



Western blot - DMD Polyclonal Antibody

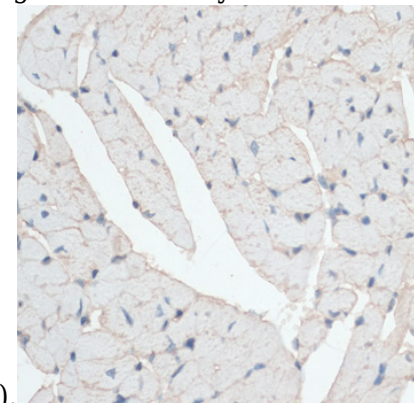
Western blot analysis of extracts of mouse heart, using DMD antibody at 1:1000 dilution. Secondary antibody: HRP Goat Anti-Rabbit IgG (H+L) at 1:10000 dilution. Lysates/proteins: 25ug per lane. Blocking buffer: 3% nonfat dry milk in TBST. Detection: ECL Enhanced Kit. Exposure



time: 90s.

Immunohistochemistry - DMD Polyclonal Antibody

Immunohistochemistry of paraffin-embedded rat heart using DMD antibody at dilution of 1:100



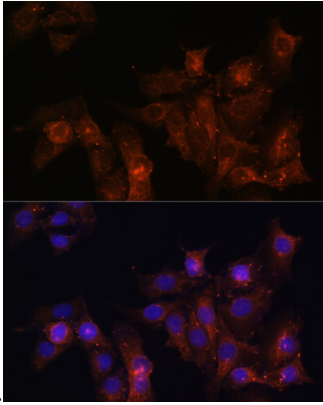
(40x lens).

DMD Polyclonal Antibody

Catalog Number: 161929

Immunohistochemistry - DMD Polyclonal Antibody

Immunohistochemistry of paraffin-embedded mouse heart using DMD antibody at dilution of



1:100 (40x lens).

Immunofluorescence - DMD Polyclonal Antibody

Immunofluorescence analysis of HeLa cells using DMD antibody at dilution of 1:100. Blue: DAPI for nuclear staining.