

# PTPN22 Polyclonal Antibody

Catalog Number: 161908

## Product name

PTPN22 Polyclonal Antibody

## Specificity

Human, Mouse, Rat

## Antibody description

Polyclonal antibody to PTPN22

## Preparation

Antigen: Recombinant fusion protein containing a sequence corresponding to amino acids 1-90 of human PTPN22 (NP\_036543.4).

## Formulation

PBS with 0.02% sodium azide, 50% glycerol, pH7.3.

## Storage

Store at -20°C. Avoid freeze / thaw cycles.

## Clonality

Polyclonal

## Ig Type

Rabbit IgG

## Applications

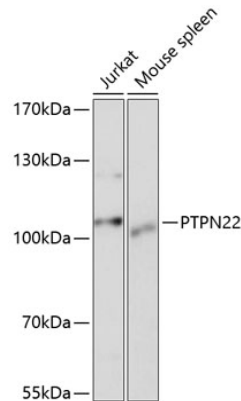
WB, IF

## Dilutions

WB 1:500 - 1:2000

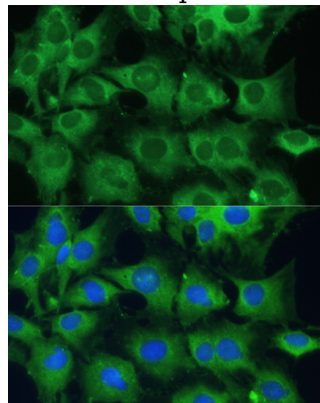
IF 1:50 - 1:200

## Validations



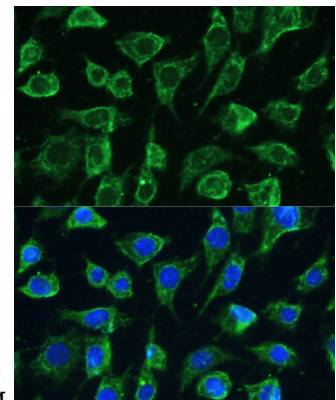
Western blot - PTPN22 Polyclonal Antibody

Western blot analysis of extracts of various cell lines, using PTPN22 antibody at 1:1000 dilution. Secondary antibody: HRP Goat Anti-Rabbit IgG (H+L) at 1:10000 dilution. Lysates/proteins: 25ug per lane. Blocking buffer: 3% nonfat dry milk in TBST. Detection: ECL Basic Kit. Exposure time: 5s.



Immunofluorescence - PTPN22 Polyclonal Antibody

Immunofluorescence analysis of C6 cells using PTPN22 antibody at dilution of 1:100. Blue: DAPI



for nuclear staining.

# PTPN22 Polyclonal Antibody

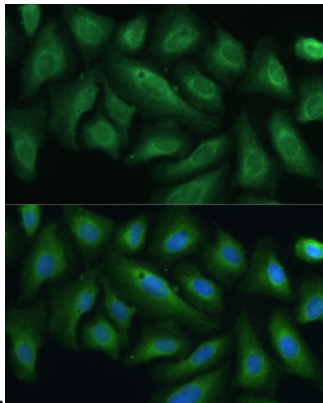


Catalog Number: 161908

---

## Immunofluorescence - PTPN22 Polyclonal Antibody

Immunofluorescence analysis of L-929 cells using PTPN22 antibody at dilution of 1:100. Blue: DAPI



for nuclear staining.

## Immunofluorescence - PTPN22 Polyclonal Antibody

Immunofluorescence analysis of U-2 OS cells using PTPN22 antibody at dilution of 1:100. Blue: DAPI for nuclear staining.