

CDA Polyclonal Antibody



Catalog Number: 161868

Product name

CDA Polyclonal Antibody

Specificity

Human, Mouse

Antibody description

Polyclonal antibody to CDA

Preparation

Antigen: Recombinant fusion protein containing a sequence corresponding to amino acids 1-146 of human CDA (NP_001776.1).

Formulation

PBS with 0.02% sodium azide, 50% glycerol, pH7.3.

Storage

Store at -20°C. Avoid freeze / thaw cycles.

Clonality

Polyclonal

Ig Type

Rabbit IgG

Applications

WB, IHC, IF

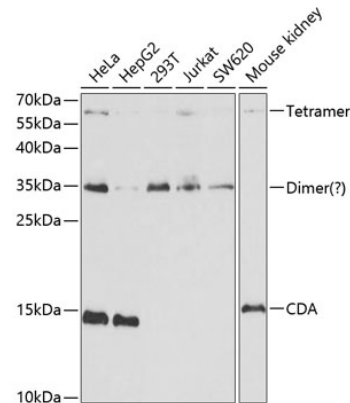
Dilutions

WB 1:500 - 1:2000

IHC 1:50 - 1:200

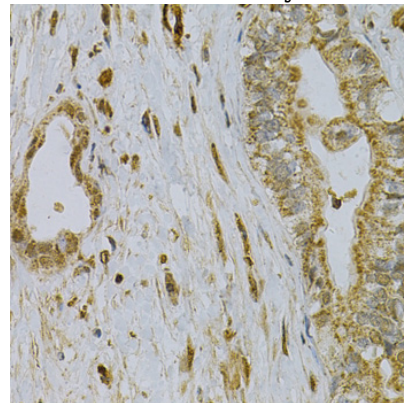
IF 1:50 - 1:100

Validations



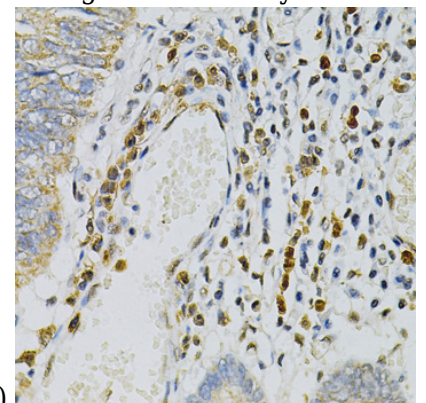
Western blot - CDA Polyclonal Antibody

Western blot analysis of extracts of various cell lines, using CDA antibody at 1:1000 dilution. Secondary antibody: HRP Goat Anti-Rabbit IgG (H+L) at 1:10000 dilution. Lysates/proteins: 25ug per lane. Blocking buffer: 3% nonfat dry milk in TBST.



Immunohistochemistry - CDA Polyclonal Antibody

Immunohistochemistry of paraffin-embedded human liver cancer using CDA Antibody at dilution



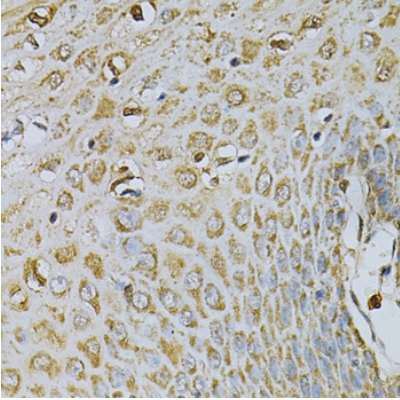
of 1:100 (40x lens).

Immunohistochemistry - CDA Polyclonal Antibody

CDA Polyclonal Antibody

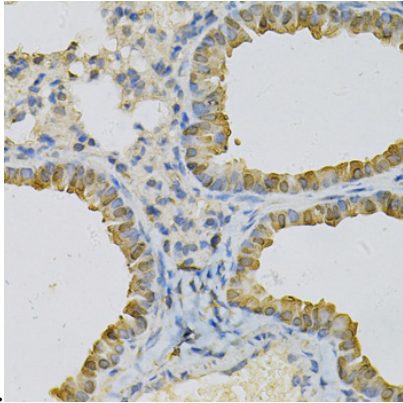
Catalog Number: 161868

Immunohistochemistry of paraffin-embedded human colon carcinoma using CDA Antibody at dilution of 1:100 (40x lens).



Immunohistochemistry - CDA Polyclonal Antibody

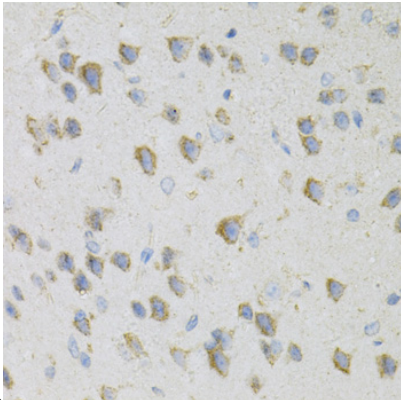
Immunohistochemistry of paraffin-embedded human esophagus using CDA Antibody at dilution



of 1:100 (40x lens).

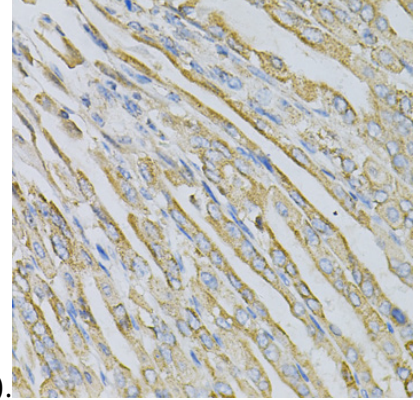
Immunohistochemistry - CDA Polyclonal Antibody

Immunohistochemistry of paraffin-embedded mouse lung using CDA Antibody at dilution of



1:100 (40x lens).

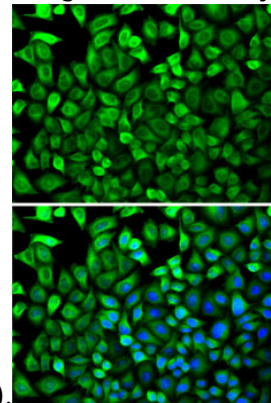
Immunohistochemistry - CDA Polyclonal Antibody
Immunohistochemistry of paraffin-embedded mouse brain using CDA Antibody at dilution of



1:100 (40x lens).

Immunohistochemistry - CDA Polyclonal Antibody

Immunohistochemistry of paraffin-embedded mouse stomach using CDA Antibody at dilution of



1:100 (40x lens).

Immunofluorescence - CDA Polyclonal Antibody

Immunofluorescence analysis of HeLa cells using CDA antibody . Blue: DAPI for nuclear staining.