

# EMD Polyclonal Antibody



Catalog Number: 161855

## Product name

EMD Polyclonal Antibody

## Specificity

Human, Mouse

## Antibody description

Polyclonal antibody to EMD

## Preparation

Antigen: Recombinant fusion protein containing a sequence corresponding to amino acids 1-220 of human EMD (NP\_000108.1).

## Formulation

PBS with 0.02% sodium azide, 50% glycerol, pH7.3.

## Storage

Store at -20°C. Avoid freeze / thaw cycles.

## Clonality

Polyclonal

## Ig Type

Rabbit IgG

## Applications

WB, IHC, IF

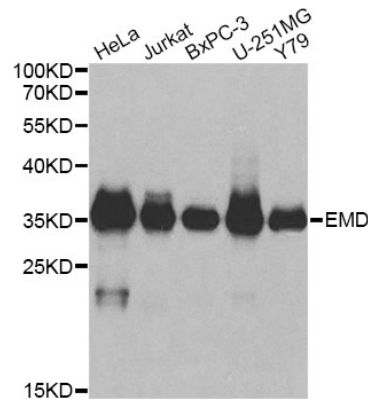
## Dilutions

WB 1:500 - 1:2000

IHC 1:50 - 1:200

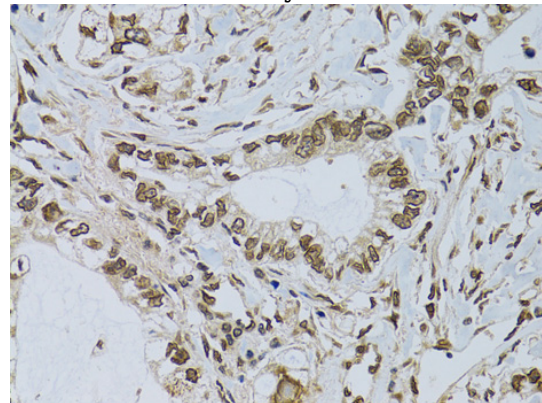
IF 1:50 - 1:200

## Validations



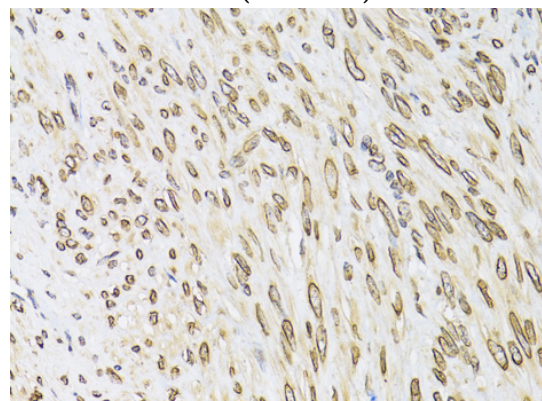
Western blot - EMD Polyclonal Antibody

Western blot analysis of extracts of various cell lines, using EMD antibody at 1:1000 dilution. Secondary antibody: HRP Goat Anti-Rabbit IgG (H+L) at 1:10000 dilution. Lysates/proteins: 25ug per lane. Blocking buffer: 3% nonfat dry milk in TBST.



Immunohistochemistry - EMD Polyclonal Antibody

Immunohistochemistry of paraffin-embedded human gastric cancer using EMD antibody at dilution of 1:100 (40x lens).



# EMD Polyclonal Antibody

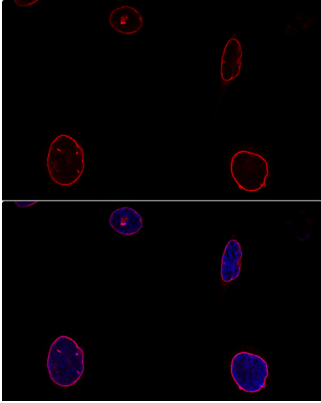


Catalog Number: 161855

---

## Immunohistochemistry - EMD Polyclonal Antibody

Immunohistochemistry of paraffin-embedded human uterine cancer using EMD antibody at dilution of 1:100 (40x lens).



## Immunofluorescence - EMD Polyclonal Antibody

Confocal immunofluorescence analysis of U-2OS cells using EMD antibody at dilution of 1:100. Blue: DAPI for nuclear staining.