

SLC25A27 Polyclonal Antibody



Catalog Number: 161819

Product name

SLC25A27 Polyclonal Antibody

Specificity

Human, Mouse, Rat

Antibody description

Polyclonal antibody to SLC25A27

Preparation

Antigen: Recombinant fusion protein containing a sequence corresponding to amino acids 1-245 of human SLC25A27 (NP_001190981.1).

Formulation

PBS with 0.02% sodium azide, 50% glycerol, pH7.3.

Storage

Store at -20°C. Avoid freeze / thaw cycles.

Clonality

Polyclonal

Ig Type

Rabbit IgG

Applications

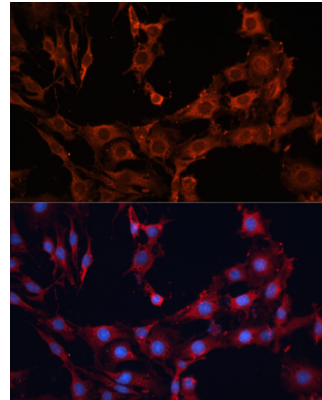
WB, IF

Dilutions

WB 1:500 - 1:2000

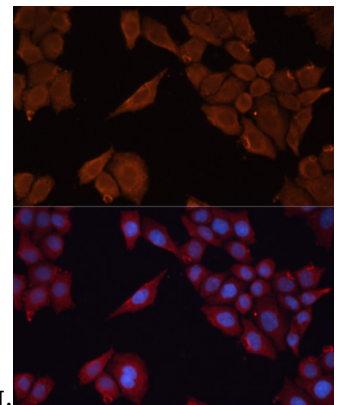
IF 1:50 - 1:200

Validations



Immunofluorescence - SLC25A27 Polyclonal Antibody

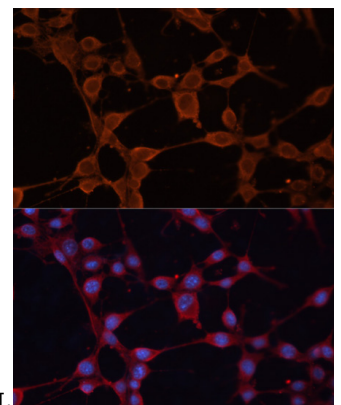
Immunofluorescence analysis of C6 cells using SLC25A27 antibody at dilution of 1:100. Blue:



DAPI for nuclear staining.

Immunofluorescence - SLC25A27 Polyclonal Antibody

Immunofluorescence analysis of HeLa cells using SLC25A27 antibody at dilution of 1:100. Blue:



DAPI for nuclear staining.

Immunofluorescence - SLC25A27 Polyclonal Antibody

SLC25A27 Polyclonal Antibody



Catalog Number: 161819

Immunofluorescence analysis of NIH/3T3 cells

using SLC25A27 antibody at dilution of 1:100.
Blue: DAPI for nuclear staining.