

# SLC25A27 Polyclonal Antibody



Catalog Number: 161818

## Product name

SLC25A27 Polyclonal Antibody

## Specificity

Mouse, Rat

## Antibody description

Polyclonal antibody to SLC25A27

## Preparation

Antigen: Recombinant fusion protein containing a sequence corresponding to amino acids 1-245 of human SLC25A27 (NP\_001190981.1).

## Formulation

PBS with 0.02% sodium azide, 50% glycerol, pH7.3.

## Storage

Store at -20°C. Avoid freeze / thaw cycles.

## Clonality

Polyclonal

## Ig Type

Rabbit IgG

## Applications

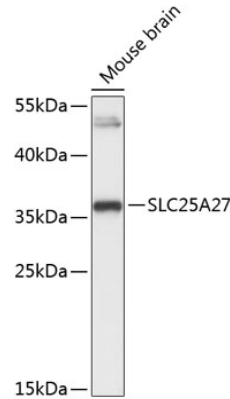
WB, IF

## Dilutions

WB 1:500 - 1:2000

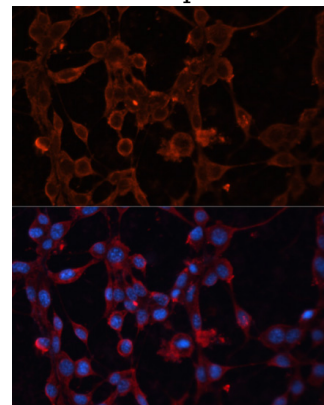
IF 1:50 - 1:200

## Validations



Western blot - SLC25A27 Polyclonal Antibody

Western blot analysis of extracts of mouse brain, using SLC25A27 Antibody at 1:3000 dilution. Secondary antibody: HRP Goat Anti-Rabbit IgG (H+L) at 1:10000 dilution. Lysates/proteins: 25ug per lane. Blocking buffer: 3% nonfat dry milk in TBST. Detection: ECL Basic Kit. Exposure time: 30s.



Immunofluorescence - SLC25A27 Polyclonal Antibody

Immunofluorescence analysis of NIH/3T3 cells using SLC25A27 antibody at dilution of 1:100. Blue: DAPI for nuclear staining.