

PMS2 Polyclonal Antibody



Catalog Number: 161741

Product name

PMS2 Polyclonal Antibody

Specificity

Human

Antibody description

Polyclonal antibody to PMS2

Preparation

Antigen: Recombinant fusion protein containing a sequence corresponding to amino acids 390-670 of human PMS2 (NP_000526.2).

Formulation

PBS with 0.02% sodium azide, 50% glycerol, pH7.3.

Storage

Store at -20°C. Avoid freeze / thaw cycles.

Clonality

Polyclonal

Ig Type

Rabbit IgG

Applications

WB, IF, IP

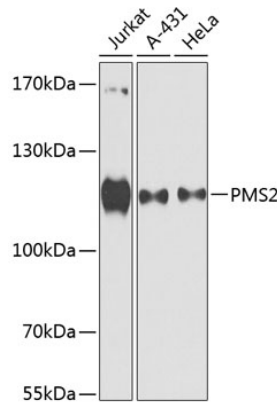
Dilutions

WB 1:500 - 1:2000

IF 1:50 - 1:200

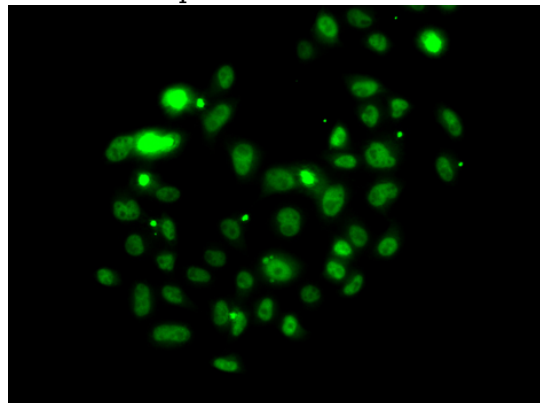
IP 1:20 - 1:50

Validations



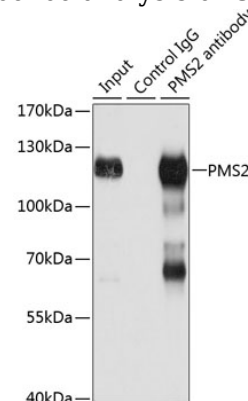
Western blot - PMS2 Polyclonal Antibody

Western blot analysis of extracts of various cell lines, using PMS2 antibody at 1:1000 dilution. Secondary antibody: HRP Goat Anti-Rabbit IgG (H+L) at 1:10000 dilution. Lysates/proteins: 25ug per lane. Blocking buffer: 3% nonfat dry milk in TBST. Detection: ECL Basic Kit. Exposure time: 90s.



Immunofluorescence - PMS2 Polyclonal Antibody

Immunofluorescence analysis of U2OS cells using



PMS2 antibody .

Immunoprecipitation - PMS2 Polyclonal Antibody

PMS2 Polyclonal Antibody



Catalog Number: 161741

Immunoprecipitation analysis of 150ug extracts of Jurkat cells using 3ug PMS2 antibody . Western

blot was performed from the immunoprecipitate using PMS2 antibody at a dilution of 1:500.