

# CCAR1 Polyclonal Antibody



Catalog Number: 161706

## Product name

CCAR1 Polyclonal Antibody

## Specificity

Human

## Antibody description

Polyclonal antibody to CCAR1

## Preparation

Antigen: Recombinant fusion protein containing a sequence corresponding to amino acids 1-200 of human CCAR1 (NP\_060707.2).

## Formulation

PBS with 0.02% sodium azide, 50% glycerol, pH7.3.

## Storage

Store at -20°C. Avoid freeze / thaw cycles.

## Clonality

Polyclonal

## Ig Type

Rabbit IgG

## Applications

WB, IF, IP

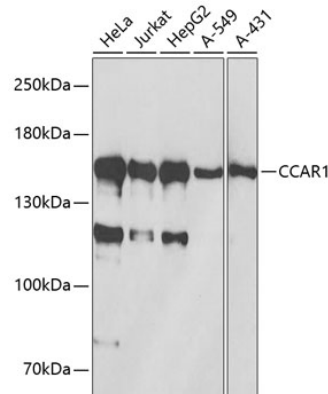
## Dilutions

WB 1:500 - 1:2000

IF 1:50 - 1:200

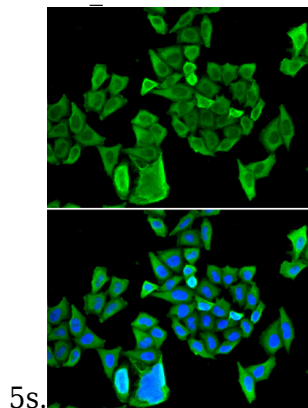
IP 1:50 - 1:100

## Validations



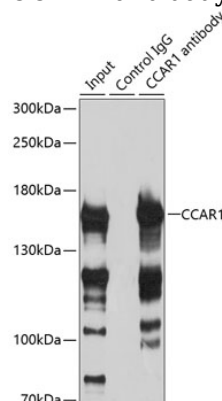
Western blot - CCAR1 Polyclonal Antibody

Western blot analysis of extracts of various cell lines, using CCAR1 antibody at 1:1000 dilution. Secondary antibody: HRP Goat Anti-Rabbit IgG (H+L) at 1:10000 dilution. Lysates/proteins: 25ug per lane. Blocking buffer: 3% nonfat dry milk in TBST. Detection: ECL Basic Kit. Exposure time:



Immunofluorescence - CCAR1 Polyclonal Antibody

Immunofluorescence analysis of HeLa cells using CCAR1 antibody. Blue: DAPI for nuclear staining.



# CCAR1 Polyclonal Antibody



Catalog Number: 161706

---

Immunoprecipitation - CCAR1 Polyclonal Antibody

HeLa cells using 3ug CCAR1 antibody . Western blot was performed from the immunoprecipitate

Immunoprecipitation analysis of 200ug extracts of

using CCAR1 antibody at a dilution of 1:500.