

RPH3A Polyclonal Antibody



Catalog Number: 161701

Product name

RPH3A Polyclonal Antibody

Specificity

Human, Mouse, Rat

Antibody description

Polyclonal antibody to RPH3A

Preparation

Antigen: Recombinant fusion protein containing a sequence corresponding to amino acids 1-280 of human RPH3A (NP_055769.2).

Formulation

PBS with 0.02% sodium azide, 50% glycerol, pH7.3.

Storage

Store at -20°C. Avoid freeze / thaw cycles.

Clonality

Polyclonal

Ig Type

Rabbit IgG

Applications

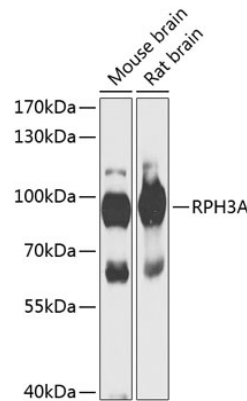
WB, IHC

Dilutions

WB 1:500 - 1:2000

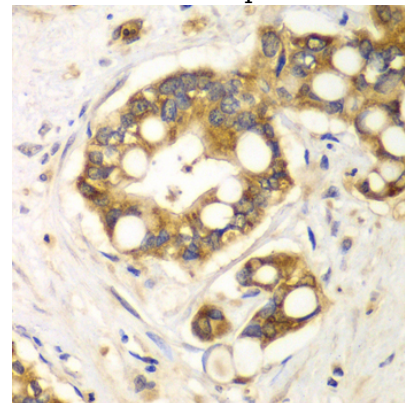
IHC 1:50 - 1:200

Validations



Western blot - RPH3A Polyclonal Antibody

Western blot analysis of extracts of various cell lines, using RPH3A antibody at 1:1000 dilution. Secondary antibody: HRP Goat Anti-Rabbit IgG (H+L) at 1:10000 dilution. Lysates/proteins: 25ug per lane. Blocking buffer: 3% nonfat dry milk in TBST. Detection: ECL Enhanced Kit. Exposure time: 10s.



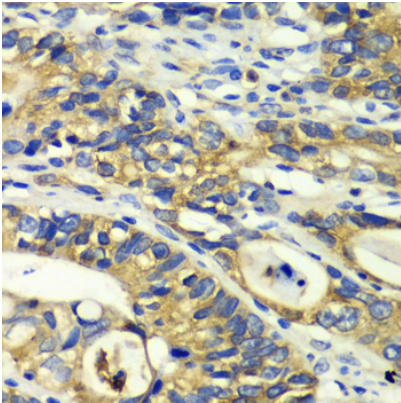
Immunohistochemistry - RPH3A Polyclonal Antibody

Immunohistochemistry of paraffin-embedded human liver cancer using RPH3A antibody at dilution of 1:100 (40x lens).

RPH3A Polyclonal Antibody

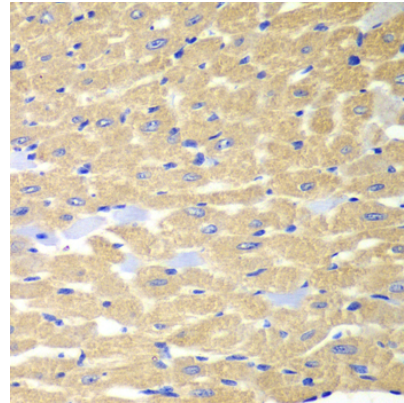


Catalog Number: 161701



Immunohistochemistry - RPH3A Polyclonal Antibody

Immunohistochemistry of paraffin-embedded human colon carcinoma using RPH3A antibody at dilution of 1:100 (40x lens).



Immunohistochemistry - RPH3A Polyclonal Antibody

Immunohistochemistry of paraffin-embedded mouse heart using RPH3A antibody at dilution of 1:100 (40x lens).