

GPI Polyclonal Antibody



Catalog Number: 161568

Product name

GPI Polyclonal Antibody

Specificity

Human, Mouse, Rat

Antibody description

Polyclonal antibody to GPI

Preparation

Antigen: Recombinant fusion protein containing a sequence corresponding to amino acids 1-280 of human GPI (NP_000166.2).

Formulation

PBS with 0.02% sodium azide, 50% glycerol, pH7.3.

Storage

Store at -20°C. Avoid freeze / thaw cycles.

Clonality

Polyclonal

Ig Type

Rabbit IgG

Applications

WB, IHC, IF

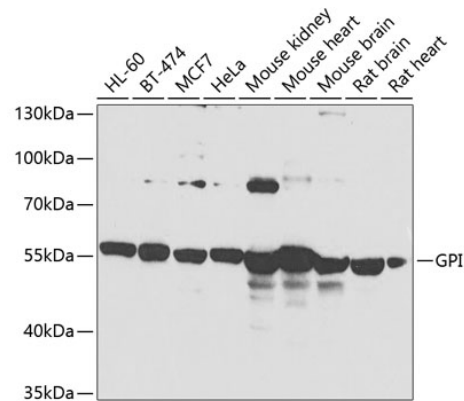
Dilutions

WB 1:500 - 1:2000

IHC 1:50 - 1:200

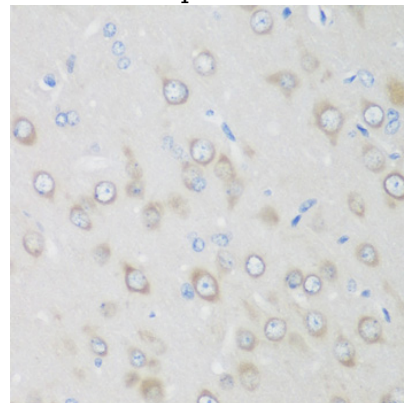
IF 1:50 - 1:200

Validations



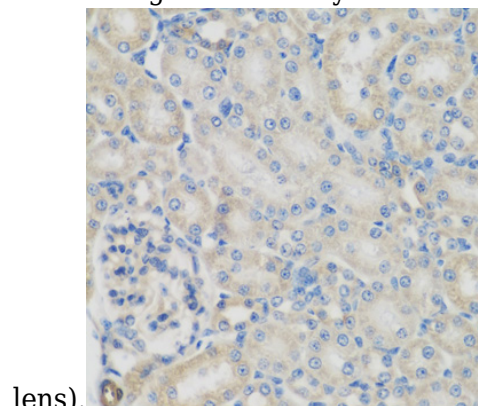
Western blot - GPI Polyclonal Antibody

Western blot analysis of extracts of various cell lines, using GPI antibody at 1:1000 dilution. Secondary antibody: HRP Goat Anti-Rabbit IgG (H+L) at 1:10000 dilution. Lysates/proteins: 25ug per lane. Blocking buffer: 3% nonfat dry milk in TBST. Detection: ECL Basic Kit. Exposure time: 90s.



Immunohistochemistry - GPI Polyclonal Antibody

Immunohistochemistry of paraffin-embedded rat brain using GPI antibody at dilution of 1:200 (40x



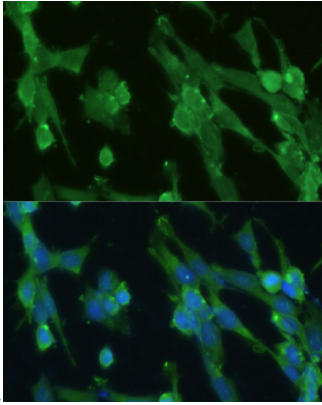
lens).

GPI Polyclonal Antibody

Catalog Number: 161568

Immunohistochemistry - GPI Polyclonal Antibody

Immunohistochemistry of paraffin-embedded rat kidney using GPI antibody at dilution of 1:200 (40x



lens).

Immunofluorescence - GPI Polyclonal Antibody

Immunofluorescence analysis of NIH-3T3 cells using GPI antibody at dilution of 1:100. Blue: DAPI for nuclear staining.