

DSP Polyclonal Antibody



Catalog Number: 161565

Product name

DSP Polyclonal Antibody

Specificity

Human, Mouse

Antibody description

Polyclonal antibody to DSP

Preparation

Antigen: A synthetic peptide corresponding to a sequence within amino acids 2750-2850 of human DSP (NP_004406.2).

Formulation

PBS with 0.02% sodium azide, 50% glycerol, pH7.3.

Storage

Store at -20°C. Avoid freeze / thaw cycles.

Clonality

Polyclonal

Ig Type

Rabbit IgG

Applications

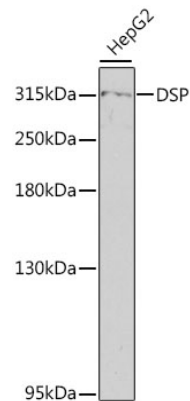
WB, IHC

Dilutions

WB 1:500 - 1:2000

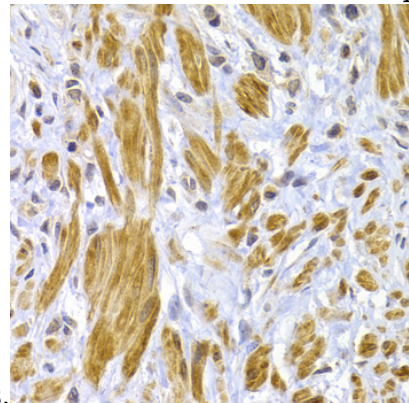
IHC 1:50 - 1:200

Validations



Western blot - DSP Polyclonal Antibody

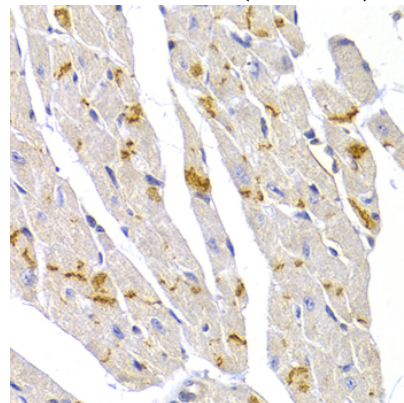
Western blot analysis of extracts of HepG2 cells, using DSP antibody at 1:800 dilution. Secondary antibody: HRP Goat Anti-Rabbit IgG (H+L) at 1:10000 dilution. Lysates/proteins: 25ug per lane. Blocking buffer: 3% nonfat dry milk in TBST. Detection: ECL Enhanced Kit. Exposure



time: 60s.

Immunohistochemistry - DSP Polyclonal Antibody

Immunohistochemistry of paraffin-embedded human gastric cancer using DSP antibody at dilution of 1:100 (40x lens).



DSP Polyclonal Antibody



Catalog Number: 161565

Immunohistochemistry - DSP Polyclonal Antibody

mouse heart using DSP antibody at dilution of 1:100 (40x lens).

Immunohistochemistry of paraffin-embedded