

HHLA2 Polyclonal Antibody

Catalog Number: 161550

Product name

HHLA2 Polyclonal Antibody

Specificity

Human, Mouse, Rat

Antibody description

Polyclonal antibody to HHLA2

Preparation

Antigen: Recombinant fusion protein containing a sequence corresponding to amino acids 30-200 of human HHLA2 (NP_009003.1).

Formulation

PBS with 0.02% sodium azide, 50% glycerol, pH7.3.

Storage

Store at -20°C. Avoid freeze / thaw cycles.

Clonality

Polyclonal

Ig Type

Rabbit IgG

Applications

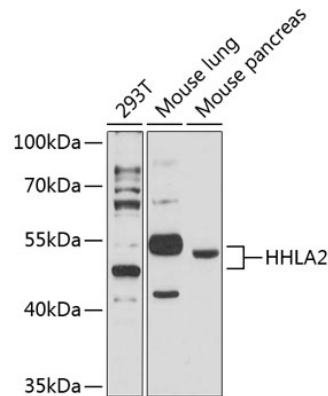
WB, IHC

Dilutions

WB 1:500 - 1:2000

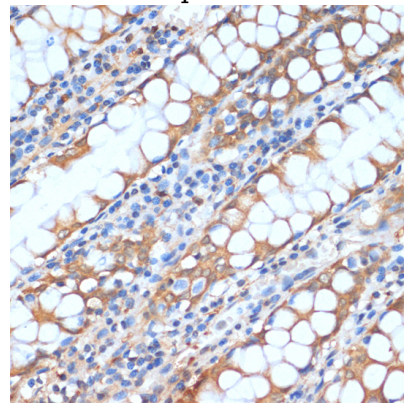
IHC 1:50 - 1:200

Validations



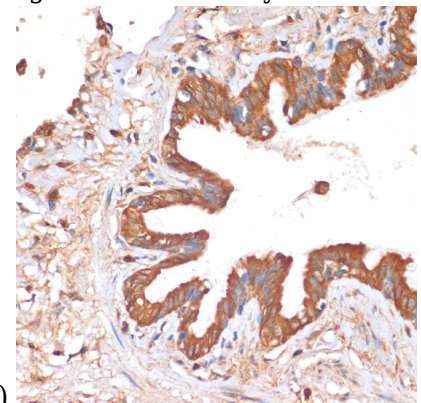
Western blot - HHLA2 Polyclonal Antibody

Western blot analysis of extracts of various cell lines, using HHLA2 antibody at 1:3000 dilution. Secondary antibody: HRP Goat Anti-Rabbit IgG (H+L) at 1:10000 dilution. Lysates/proteins: 25ug per lane. Blocking buffer: 3% nonfat dry milk in TBST. Detection: ECL Basic Kit. Exposure time: 30s.



Immunohistochemistry - HHLA2 Polyclonal Antibody

Immunohistochemistry of paraffin-embedded human colon using HHLA2 antibody at dilution of



1:100 (40x lens).

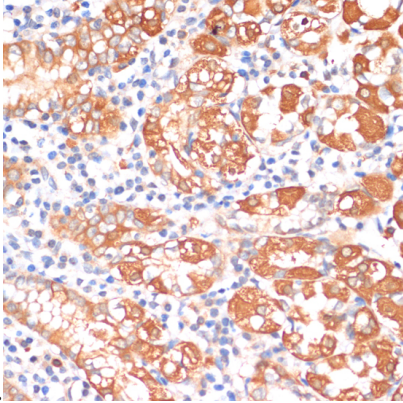
HHLA2 Polyclonal Antibody



Catalog Number: 161550

Immunohistochemistry - HHLA2 Polyclonal Antibody

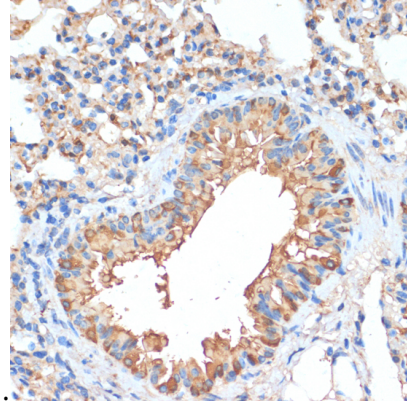
Immunohistochemistry of paraffin-embedded human lung using HHLA2 antibody at dilution of



1:100 (40x lens).

Immunohistochemistry - HHLA2 Polyclonal Antibody

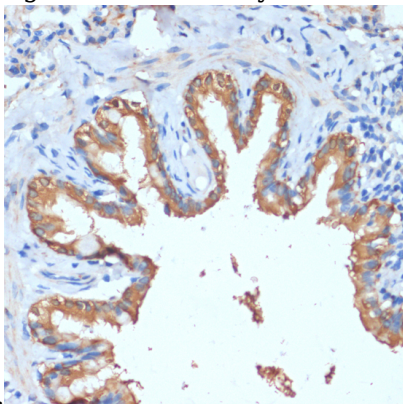
Immunohistochemistry of paraffin-embedded rat lung using HHLA2 antibody at dilution of 1:100



(40x lens).

Immunohistochemistry - HHLA2 Polyclonal Antibody

Immunohistochemistry of paraffin-embedded human stomach using HHLA2 antibody at dilution



of 1:100 (40x lens).

Immunohistochemistry - HHLA2 Polyclonal Antibody

Immunohistochemistry of paraffin-embedded mouse lung using HHLA2 antibody at dilution of 1:100 (40x lens).