

IDH1 Polyclonal Antibody



Catalog Number: 161545

Product name

IDH1 Polyclonal Antibody

Specificity

Human, Mouse, Rat

Antibody description

Polyclonal antibody to IDH1

Preparation

Antigen: Recombinant fusion protein containing a sequence corresponding to amino acids 1-414 of human IDH1 (NP_005887.2).

Formulation

PBS with 0.02% sodium azide, 50% glycerol, pH7.3.

Storage

Store at -20°C. Avoid freeze / thaw cycles.

Clonality

Polyclonal

Ig Type

Rabbit IgG

Applications

WB, IF, IP

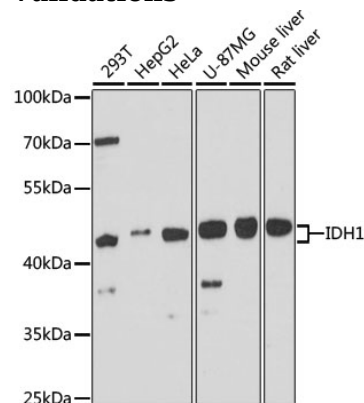
Dilutions

WB 1:500 - 1:2000

IF 1:50 - 1:200

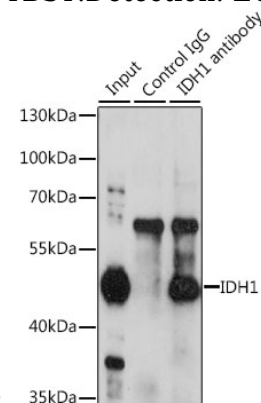
IP 1:50 - 1:100

Validations



Western blot - IDH1 Polyclonal Antibody

Western blot analysis of extracts of various cell lines, using IDH1 antibody at 1:3000 dilution. Secondary antibody: HRP Goat Anti-Rabbit IgG (H+L) at 1:10000 dilution. Lysates/proteins: 25ug per lane. Blocking buffer: 3% nonfat dry milk in TBST. Detection: ECL



Basic Kit .Exposure time: 30s.

Immunoprecipitation - IDH1 Polyclonal Antibody

Immunoprecipitation analysis of 200ug extracts of HeLa cells, using 3 ug IDH1 antibody . Western blot was performed from the immunoprecipitate using IDH1 antibody at a dilution of 1:1000.