

# ZP3 Polyclonal Antibody

Catalog Number: 161482

## Product name

ZP3 Polyclonal Antibody

## Specificity

Human, Mouse, Rat

## Antibody description

Polyclonal antibody to ZP3

## Preparation

Antigen: A synthetic peptide corresponding to a sequence within amino acids 250-350 of human ZP3 (NP\_001103824.1).

## Formulation

PBS with 0.02% sodium azide, 50% glycerol, pH7.3.

## Storage

Store at -20°C. Avoid freeze / thaw cycles.

## Clonality

Polyclonal

## Ig Type

Rabbit IgG

## Applications

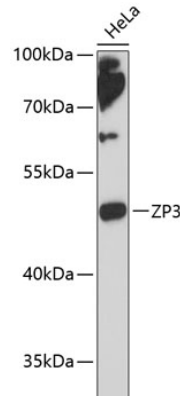
WB, IF

## Dilutions

WB 1:500 - 1:2000

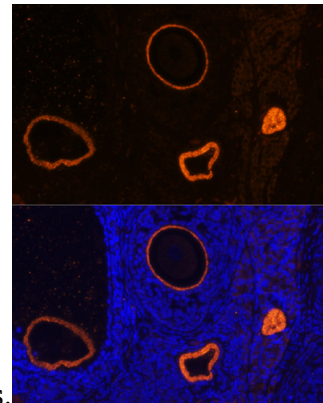
IF 1:50 - 1:200

## Validations



Western blot - ZP3 Polyclonal Antibody

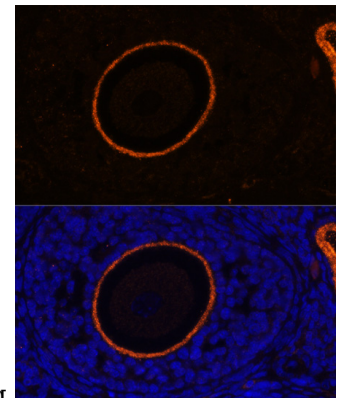
Western blot analysis of extracts of HeLa cells, using ZP3 antibody at 1:3000 dilution. Secondary antibody: HRP Goat Anti-Rabbit IgG (H+L) at 1:10000 dilution. Lysates/proteins: 25ug per lane. Blocking buffer: 3% nonfat dry milk in TBST. Detection: ECL Enhanced Kit. Exposure



time: 90s.

Immunofluorescence - ZP3 Polyclonal Antibody

Immunofluorescence analysis of rat oophoroma cells using ZP3 antibody at dilution of 1:100. Blue:



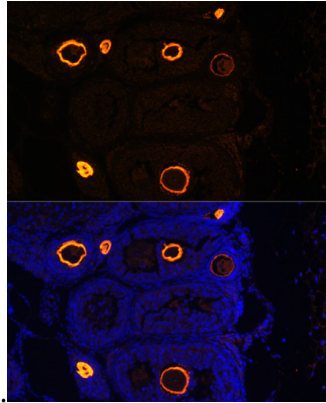
DAPI for nuclear staining.

Immunofluorescence - ZP3 Polyclonal Antibody

# ZP3 Polyclonal Antibody

Catalog Number: 161482

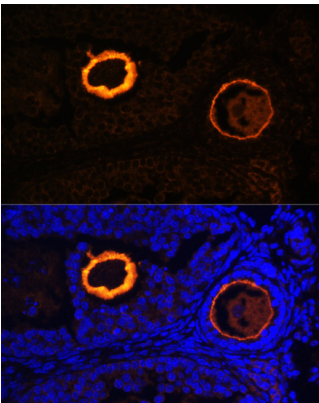
Immunofluorescence analysis of rat oophoroma cells using ZP3 antibody at dilution of 1:100. Blue:



DAPI for nuclear staining.

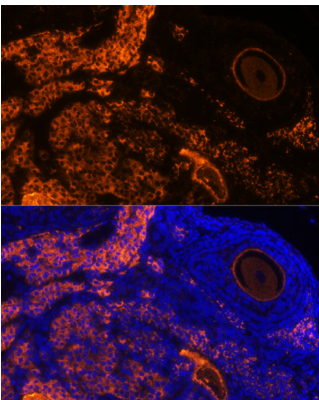
Immunofluorescence - ZP3 Polyclonal Antibody

Immunofluorescence analysis of mouse oophoroma cells using ZP3 antibody at dilution of 1:100. Blue: DAPI for nuclear staining.



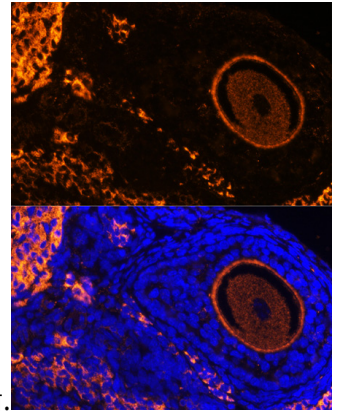
Immunofluorescence - ZP3 Polyclonal Antibody

Immunofluorescence analysis of mouse oophoroma cells using ZP3 antibody at dilution of 1:100. Blue: DAPI for nuclear staining.



Immunofluorescence - ZP3 Polyclonal Antibody

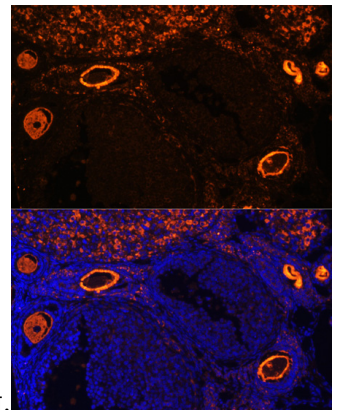
Immunofluorescence analysis of rat oophoroma cells using ZP3 antibody at dilution of 1:100. Blue:



DAPI for nuclear staining.

Immunofluorescence - ZP3 Polyclonal Antibody

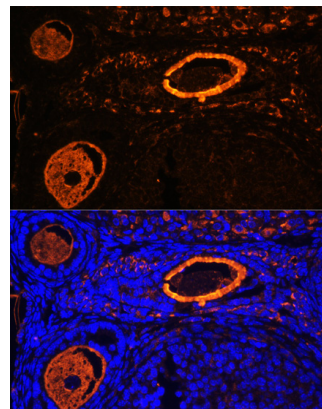
Immunofluorescence analysis of rat oophoroma cells using ZP3 antibody at dilution of 1:100. Blue:



DAPI for nuclear staining.

Immunofluorescence - ZP3 Polyclonal Antibody

Immunofluorescence analysis of mouse oophoroma cells using ZP3 antibody at dilution of 1:100. Blue: DAPI for nuclear staining.



Immunofluorescence - ZP3 Polyclonal Antibody

# ZP3 Polyclonal Antibody



Catalog Number: 161482

---

Immunofluorescence analysis of mouse

oophoroma cells using ZP3 antibody at dilution of 1:100. Blue: DAPI for nuclear staining.