

ANO2 Polyclonal Antibody



Catalog Number: 161452

Product name

ANO2 Polyclonal Antibody

Specificity

Human, Mouse, Rat

Antibody description

Polyclonal antibody to ANO2

Preparation

Antigen: Recombinant fusion protein containing a sequence corresponding to amino acids 1-200 of human ANO2 (NP_001265526.1).

Formulation

PBS with 0.02% sodium azide, 50% glycerol, pH7.3.

Storage

Store at -20°C. Avoid freeze / thaw cycles.

Clonality

Polyclonal

Ig Type

Rabbit IgG

Applications

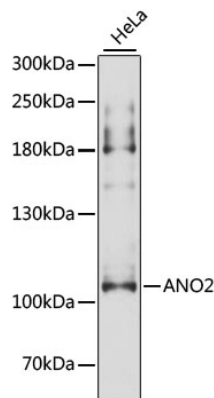
WB, IHC

Dilutions

WB 1:1000 - 1:2000

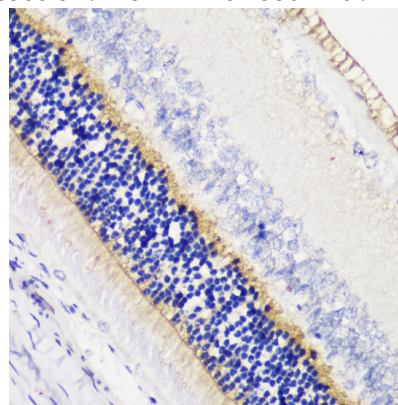
IHC 1:50 - 1:200

Validations



Western blot - ANO2 Polyclonal Antibody

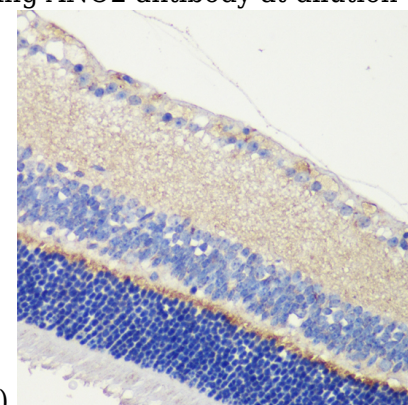
Western blot analysis of extracts of HeLa cells, using ANO2 antibody at 1:3000 dilution. Secondary antibody: HRP Goat Anti-Rabbit IgG (H+L) at 1:10000 dilution. Lysates/proteins: 25ug per lane. Blocking buffer: 3% nonfat dry milk in TBST. Detection: ECL Enhanced Kit. Exposure



time: 20s.

Immunohistochemistry - ANO2 Polyclonal Antibody

Immunohistochemistry of paraffin-embedded rat retina using ANO2 antibody at dilution of 1:200



(40x lens).

ANO2 Polyclonal Antibody



Catalog Number: 161452

Immunohistochemistry - ANO2 Polyclonal Antibody

Immunohistochemistry of paraffin-embedded mouse retina using ANO2 antibody at dilution of 1:200 (40x lens).