

# HAL Polyclonal Antibody

Catalog Number: 161396

## Product name

HAL Polyclonal Antibody

## Specificity

Human, Mouse, Rat

## Antibody description

Polyclonal antibody to HAL

## Preparation

Antigen: Recombinant fusion protein containing a sequence corresponding to amino acids 1-200 of human HAL (NP\_002099.1).

## Formulation

PBS with 0.02% sodium azide, 50% glycerol, pH7.3.

## Storage

Store at -20°C. Avoid freeze / thaw cycles.

## Clonality

Polyclonal

## Ig Type

Rabbit IgG

## Applications

WB, IHC, IF

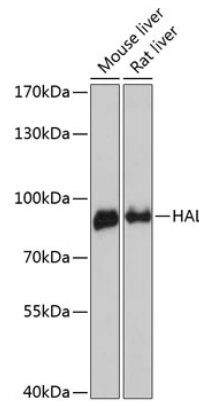
## Dilutions

WB 1:500 - 1:2000

IHC 1:50 - 1:100

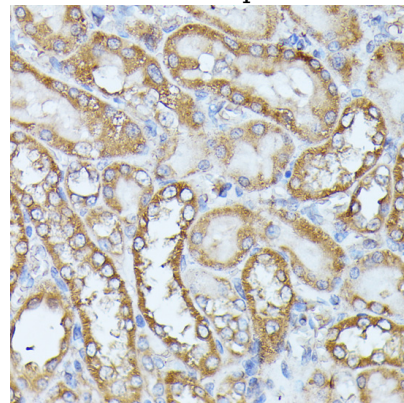
IF 1:50 - 1:100

## Validations



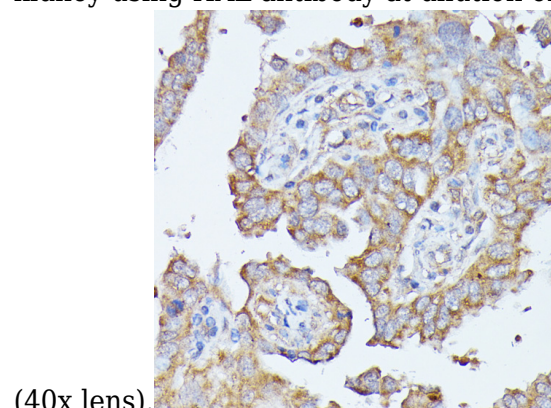
## Western blot - HAL Polyclonal Antibody

Western blot analysis of extracts of various cell lines, using HAL antibody at 1:3000 dilution. Secondary antibody: HRP Goat Anti-Rabbit IgG (H+L) at 1:10000 dilution. Lysates/proteins: 25ug per lane. Blocking buffer: 3% nonfat dry milk in TBST. Detection: ECL Enhanced Kit. Exposure time: 90s.



## Immunohistochemistry - HAL Polyclonal Antibody

Immunohistochemistry of paraffin-embedded rat kidney using HAL antibody at dilution of 1:100



(40x lens).

# HAL Polyclonal Antibody

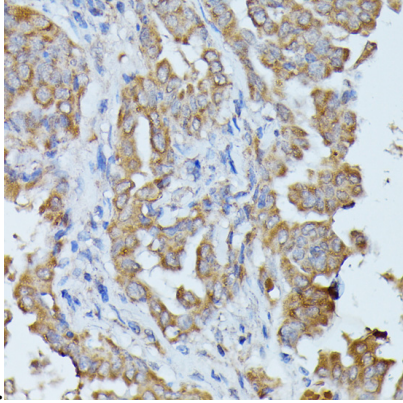


Catalog Number: 161396

---

Immunohistochemistry - HAL Polyclonal Antibody

Immunohistochemistry of paraffin-embedded human lung cancer using HAL antibody at dilution

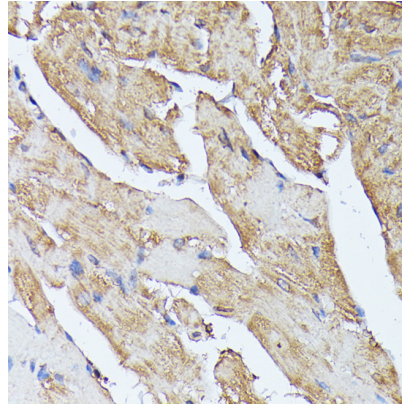


of 1:100 (40x lens).

Immunohistochemistry - HAL Polyclonal Antibody

Immunohistochemistry of paraffin-embedded

human thyroid cancer using HAL antibody at dilution of 1:100 (40x lens).



Immunohistochemistry - HAL Polyclonal Antibody

Immunohistochemistry of paraffin-embedded mouse heart using HAL antibody at dilution of 1:100 (40x lens).