

# MST1 Polyclonal Antibody



Catalog Number: 161371

## Product name

MST1 Polyclonal Antibody

## Specificity

Human, Mouse, Rat

## Antibody description

Polyclonal antibody to MST1

## Preparation

Antigen: Recombinant fusion protein containing a sequence corresponding to amino acids 200-500 of human MST1 (NP\_066278.3).

## Formulation

PBS with 0.02% sodium azide, 50% glycerol, pH7.3.

## Storage

Store at -20°C. Avoid freeze / thaw cycles.

## Clonality

Polyclonal

## Ig Type

Rabbit IgG

## Applications

WB, IHC, IF

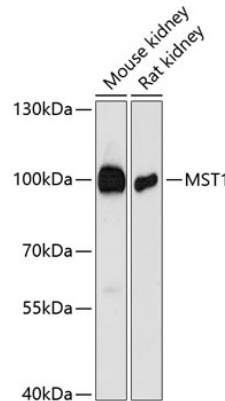
## Dilutions

WB 1:500 - 1:2000

IHC 1:50 - 1:200

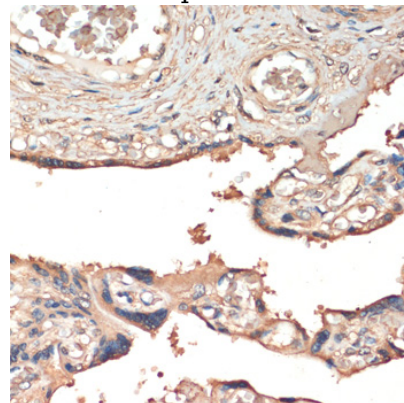
IF 1:50 - 1:200

## Validations



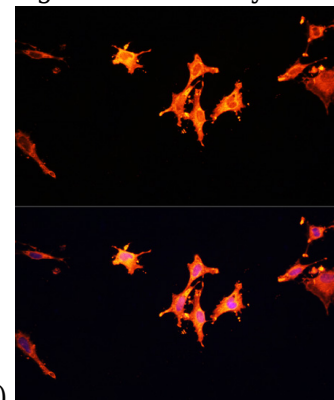
Western blot - MST1 Polyclonal Antibody

Western blot analysis of extracts of various cell lines, using MST1 antibody at 1:3000 dilution. Secondary antibody: HRP Goat Anti-Rabbit IgG (H+L) at 1:10000 dilution. Lysates/proteins: 25ug per lane. Blocking buffer: 3% nonfat dry milk in TBST. Detection: ECL Basic Kit. Exposure time: 90s.



Immunohistochemistry - MST1 Polyclonal Antibody

Immunohistochemistry of paraffin-embedded human placenta using MST1 antibody at dilution



of 1:200 (40x lens).

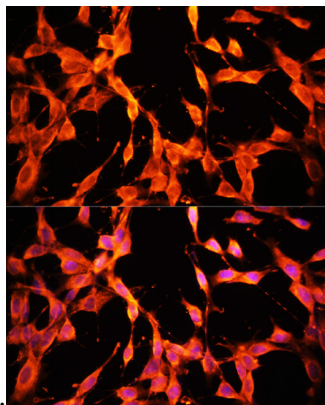
# MST1 Polyclonal Antibody

Catalog Number: 161371

---

## Immunofluorescence - MST1 Polyclonal Antibody

Immunofluorescence analysis of C6 cells using MST1 antibody at dilution of 1:100. Blue: DAPI for



nuclear staining.

## Immunofluorescence - MST1 Polyclonal Antibody

Immunofluorescence analysis of NIH/3T3 cells using MST1 antibody at dilution of 1:100. Blue: DAPI for nuclear staining.