

LIN28B Polyclonal Antibody



Catalog Number: 161369

Product name

LIN28B Polyclonal Antibody

Specificity

Human, Mouse

Antibody description

Polyclonal antibody to LIN28B

Preparation

Antigen: Recombinant fusion protein containing a sequence corresponding to amino acids 161-250 of human LIN28B (NP_001004317.1).

Formulation

PBS with 0.02% sodium azide, 50% glycerol, pH7.3.

Storage

Store at -20°C. Avoid freeze / thaw cycles.

Clonality

Polyclonal

Ig Type

Rabbit IgG

Applications

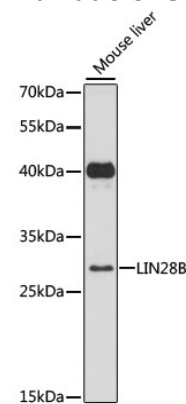
WB, IF

Dilutions

WB 1:500 - 1:2000

IF 1:50 - 1:200

Validations



Western blot - LIN28B Polyclonal Antibody

Western blot analysis of extracts of mouse liver, using LIN28B antibody at 1:3000 dilution. Secondary antibody: HRP Goat Anti-Rabbit IgG (H+L) at 1:10000 dilution. Lysates/proteins: 25ug per lane. Blocking buffer: 3% nonfat dry milk in TBST. Detection: ECL Enhanced Kit. Exposure time: 90s.