

LHFPL2 Polyclonal Antibody



Catalog Number: 161323

Product name

Rabbit IgG

LHFPL2 Polyclonal Antibody

Applications

Specificity

WB

Mouse

Dilutions

Antibody description

WB 1:500 - 1:2000

Polyclonal antibody to LHFPL2

Validations

Preparation

Antigen: Recombinant fusion protein containing a sequence corresponding to amino acids 30-100 of human LHFPL2 (NP_005770.1).

Formulation

PBS with 0.02% sodium azide, 50% glycerol, pH7.3.

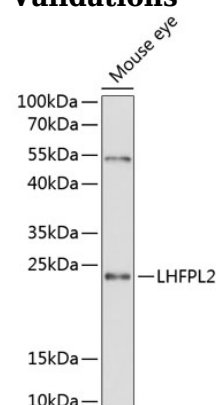
Storage

Store at -20°C. Avoid freeze / thaw cycles.

Clonality

Polyclonal

Ig Type



Western blot - LHFPL2 Polyclonal Antibody

Western blot analysis of extracts of mouse eye, using LHFPL2 antibody at 1:3000 dilution. Secondary antibody: HRP Goat Anti-Rabbit IgG (H+L) at 1:10000 dilution. Lysates/proteins: 25ug per lane. Blocking buffer: 3% nonfat dry milk in TBST. Detection: ECL Enhanced Kit. Exposure time: 90s.