

# RAG1 Polyclonal Antibody



Catalog Number: 161191

## Product name

RAG1 Polyclonal Antibody

## Specificity

Mouse

## Antibody description

Polyclonal antibody to RAG1

## Preparation

Antigen: Recombinant fusion protein containing a sequence corresponding to amino acids 1-270 of human RAG1 (NP\_000439.1).

## Formulation

PBS with 0.02% sodium azide, 50% glycerol, pH7.3.

## Storage

Store at -20°C. Avoid freeze / thaw cycles.

## Clonality

Polyclonal

## Ig Type

Rabbit IgG

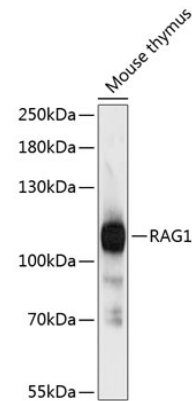
## Applications

WB

## Dilutions

WB 1:1000 - 1:3000

## Validations



Western blot - RAG1 Polyclonal Antibody

Western blot analysis of extracts of mouse thymus, using RAG1 antibody at 1:3000 dilution. Secondary antibody: HRP Goat Anti-Rabbit IgG (H+L) at 1:10000 dilution. Lysates/proteins: 25ug per lane. Blocking buffer: 3% nonfat dry milk in TBST. Detection: ECL Basic Kit. Exposure time: 90s.