

SELENBP1 Polyclonal Antibody



Catalog Number: 161180

Product name

SELENBP1 Polyclonal Antibody

Specificity

Human, Mouse

Antibody description

Polyclonal antibody to SELENBP1

Preparation

Antigen: Recombinant fusion protein containing a sequence corresponding to amino acids 243-472 of human SELENBP1 (NP_003935.2).

Formulation

PBS with 0.02% sodium azide, 50% glycerol, pH7.3.

Storage

Store at -20°C. Avoid freeze / thaw cycles.

Clonality

Polyclonal

Ig Type

Rabbit IgG

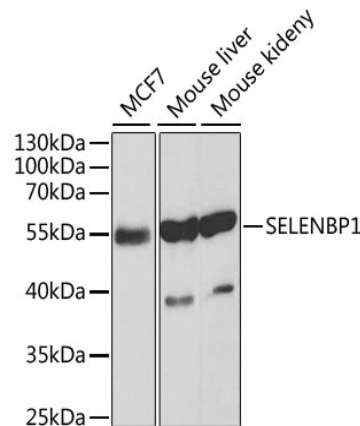
Applications

WB, IHC, IF

Dilutions

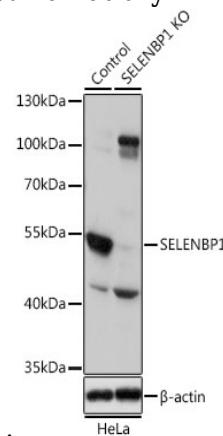
WB 1:500 - 1:2000
IHC 1:50 - 1:200
IF 1:50 - 1:200

Validations



Western blot - SELENBP1 Polyclonal Antibody

Western blot analysis of extracts of various cell lines, using SELENBP1 antibody at 1:1000 dilution. Secondary antibody: HRP Goat Anti-Rabbit IgG (H+L) at 1:10000 dilution. Lysates/proteins: 25ug per lane. Blocking buffer: 3% nonfat dry milk in TBST. Detection: ECL



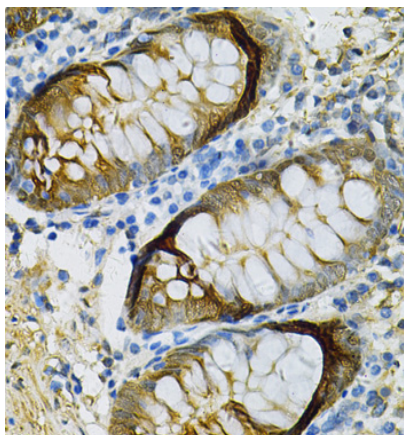
Basic Kit .

Western blot - SELENBP1 Polyclonal Antibody

Western blot analysis of extracts from normal (control) and SELENBP1 knockout HeLa cells, using SELENBP1 antibody at 1:1000 dilution. Secondary antibody: HRP Goat Anti-Rabbit IgG (H+L) at 1:10000 dilution. Lysates/proteins: 25ug per lane. Blocking buffer: 3% nonfat dry milk in TBST. Detection: ECL Basic Kit . Exposure time: 5s.

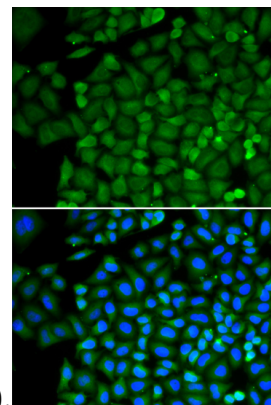
SELENBP1 Polyclonal Antibody

Catalog Number: 161180



Immunohistochemistry - SELENBP1 Polyclonal Antibody

Immunohistochemistry of paraffin-embedded human colon using SELENBP1 Antibody at



dilution of 1:100 (40x lens).

Immunofluorescence - SELENBP1 Polyclonal Antibody

Immunofluorescence analysis of HeLa cells using SELENBP1 antibody . Blue: DAPI for nuclear staining.