

# TUSC3 Polyclonal Antibody



Catalog Number: 161143

## Product name

TUSC3 Polyclonal Antibody

## Specificity

Human, Mouse, Rat

## Antibody description

Polyclonal antibody to TUSC3

## Preparation

Antigen: Recombinant fusion protein containing a sequence corresponding to amino acids 42-200 of human TUSC3 (NP\_839952.1).

## Formulation

PBS with 0.02% sodium azide, 50% glycerol, pH7.3.

## Storage

Store at -20°C. Avoid freeze / thaw cycles.

## Clonality

Polyclonal

## Ig Type

Rabbit IgG

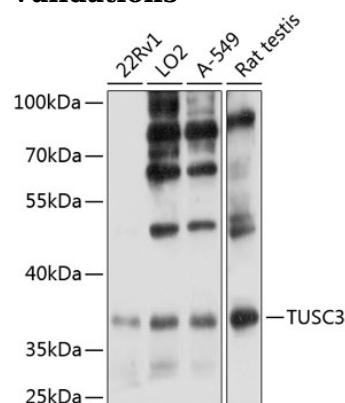
## Applications

WB

## Dilutions

WB 1:500 - 1:2000

## Validations



## Western blot - TUSC3 Polyclonal Antibody

Western blot analysis of extracts of various cell lines, using TUSC3 antibody at 1:3000 dilution. Secondary antibody: HRP Goat Anti-Rabbit IgG (H+L) at 1:10000 dilution. Lysates/proteins: 25ug per lane. Blocking buffer: 3% nonfat dry milk in TBST. Detection: ECL Enhanced Kit. Exposure time: 10s.