

# RASSF1 Polyclonal Antibody



Catalog Number: 161139

## Product name

RASSF1 Polyclonal Antibody

## Specificity

Human, Mouse

## Antibody description

Polyclonal antibody to RASSF1

## Preparation

Antigen: Recombinant fusion protein containing a sequence corresponding to amino acids 101-340 of human RASSF1 (NP\_009113.3).

## Formulation

PBS with 0.02% sodium azide, 50% glycerol, pH7.3.

## Storage

Store at -20°C. Avoid freeze / thaw cycles.

## Clonality

Polyclonal

## Ig Type

Rabbit IgG

## Applications

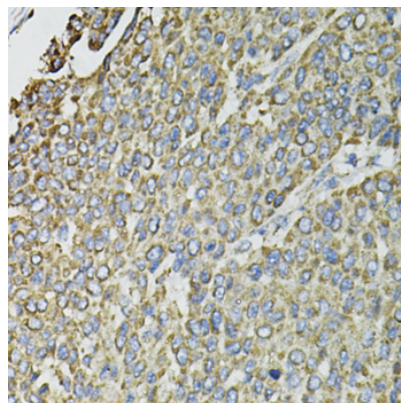
IHC, IF

## Dilutions

IHC 1:50 - 1:100

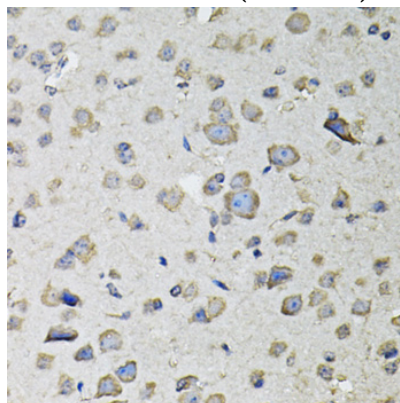
IF 1:50 - 1:100

## Validations



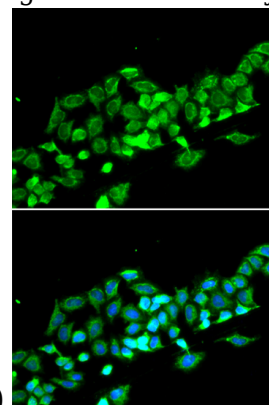
Immunohistochemistry - RASSF1 Polyclonal Antibody

Immunohistochemistry of paraffin-embedded human liver cancer using RASSF1 antibody at dilution of 1:100 (40x lens).



Immunohistochemistry - RASSF1 Polyclonal Antibody

Immunohistochemistry of paraffin-embedded mouse brain using RASSF1 antibody at dilution of



1:100 (40x lens).

Immunofluorescence - RASSF1 Polyclonal Antibody

# RASSF1 Polyclonal Antibody



Catalog Number: 161139

---

Immunofluorescence analysis of MCF-7 cells using RASSF1 antibody . Blue: DAPI for nuclear staining.