

SMN2 Polyclonal Antibody



Catalog Number: 161109

Product name

SMN2 Polyclonal Antibody

Specificity

Human, Mouse, Rat

Antibody description

Polyclonal antibody to SMN2

Preparation

Antigen: Recombinant fusion protein containing a sequence corresponding to amino acids 1-197 of human SMN2 (NP_059107.1).

Formulation

PBS with 0.02% sodium azide, 50% glycerol, pH7.3.

Storage

Store at -20°C. Avoid freeze / thaw cycles.

Clonality

Polyclonal

Ig Type

Rabbit IgG

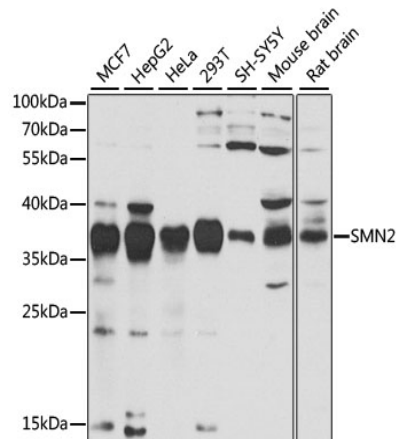
Applications

WB, IHC, IF

Dilutions

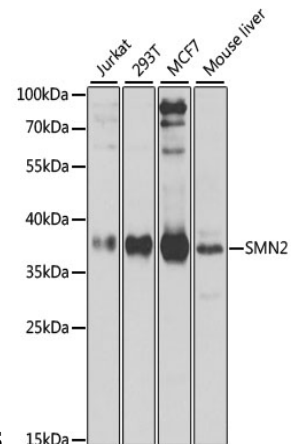
WB 1:500 - 1:2000
IHC 1:50 - 1:200
IF 1:50 - 1:200

Validations



Western blot - SMN2 Polyclonal Antibody

Western blot analysis of extracts of various cell lines, using SMN2 antibody at 1:1000 dilution. Secondary antibody: HRP Goat Anti-Rabbit IgG (H+L) at 1:10000 dilution. Lysates/proteins: 25ug per lane. Blocking buffer: 3% nonfat dry milk in TBST. Detection: ECL



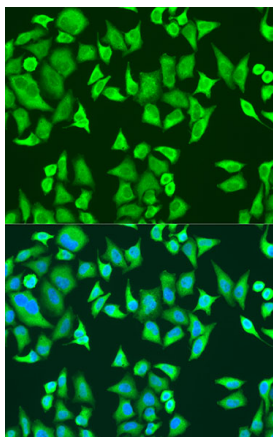
Basic Kit .Exposure time: 30s.

Western blot - SMN2 Polyclonal Antibody

Western blot analysis of extracts of various cell lines, using SMN2 antibody at 1:1000 dilution. Secondary antibody: HRP Goat Anti-Rabbit IgG (H+L) at 1:10000 dilution. Lysates/proteins: 25ug per lane. Blocking buffer: 3% nonfat dry milk in TBST. Detection: ECL Enhanced Kit .Exposure time: 30s.

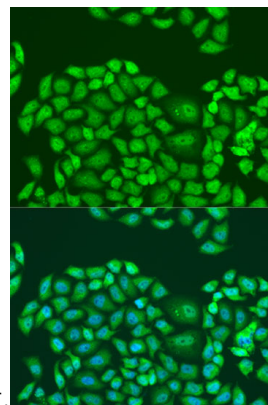
SMN2 Polyclonal Antibody

Catalog Number: 161109



Immunofluorescence - SMN2 Polyclonal Antibody

Immunofluorescence analysis of U2OS cells using SMN2 antibody at dilution of 1:100. Blue: DAPI for



nuclear staining.

Immunofluorescence - SMN2 Polyclonal Antibody

Immunofluorescence analysis of U2OS cells using SMN2 antibody at dilution of 1:100. Blue: DAPI for nuclear staining.