

SRPX Polyclonal Antibody



Catalog Number: 160979

Product name

SRPX Polyclonal Antibody

Specificity

Human, Mouse

Antibody description

Polyclonal antibody to SRPX

Preparation

Antigen: Recombinant fusion protein containing a sequence corresponding to amino acids 40-320 of human SRPX (NP_006298.1).

Formulation

PBS with 0.02% sodium azide, 50% glycerol, pH7.3.

Storage

Store at -20°C. Avoid freeze / thaw cycles.

Clonality

Polyclonal

Ig Type

Rabbit IgG

Applications

WB, IHC, IF

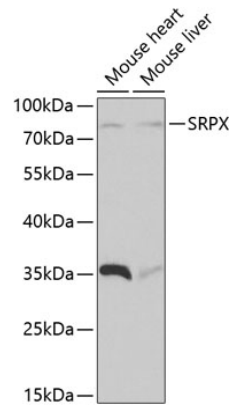
Dilutions

WB 1:500 - 1:2000

IHC 1:50 - 1:100

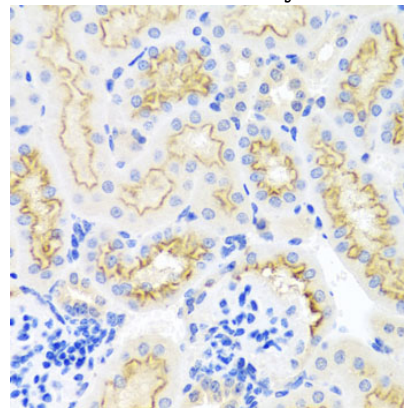
IF 1:50 - 1:100

Validations



Western blot - SRPX Polyclonal Antibody

Western blot analysis of extracts of various cell lines, using SRPX antibody at 1:1000 dilution. Secondary antibody: HRP Goat Anti-Rabbit IgG (H+L) at 1:10000 dilution. Lysates/proteins: 25ug per lane. Blocking buffer: 3% nonfat dry milk in TBST.



Immunohistochemistry - SRPX Polyclonal Antibody

Immunohistochemistry of paraffin-embedded mouse kidney using SRPX antibody at dilution of 1:100 (40x lens).